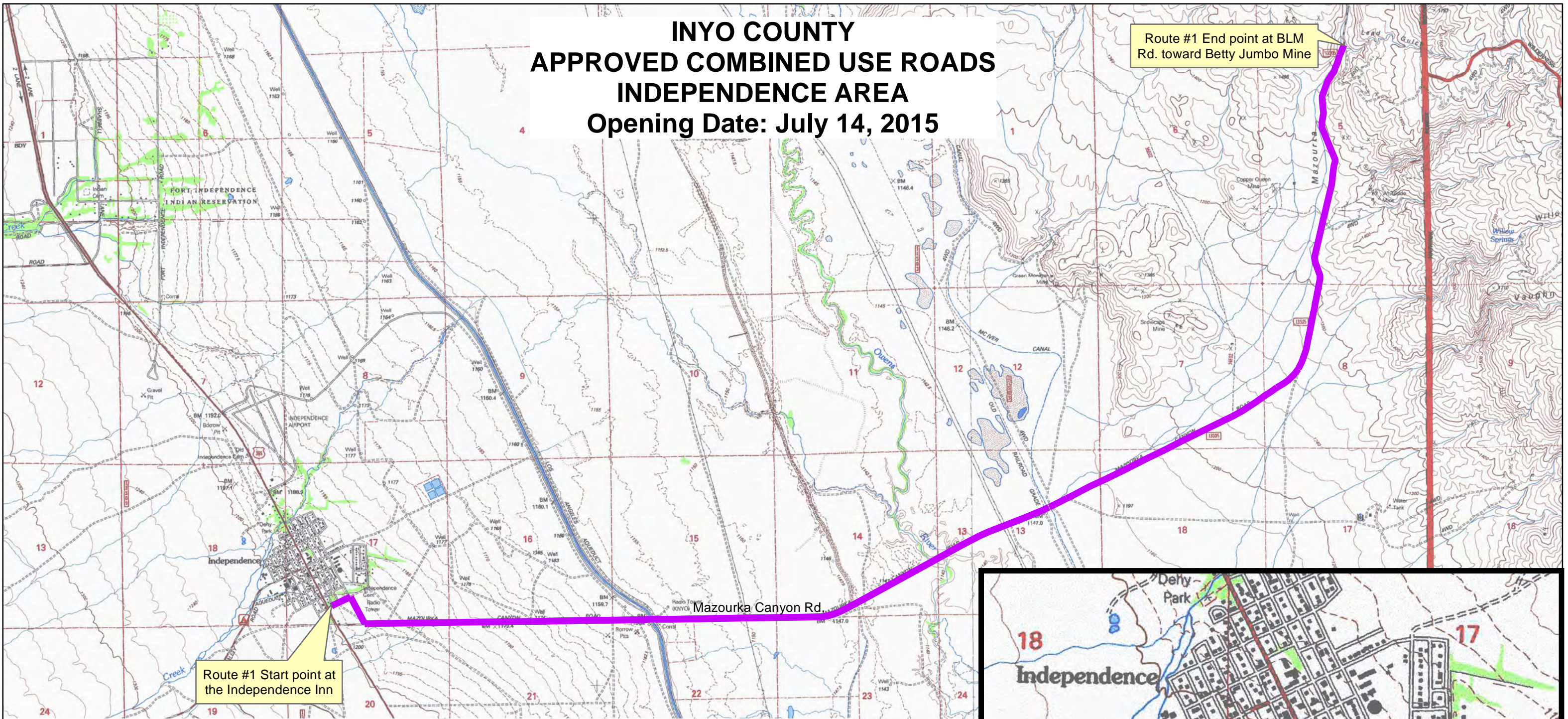
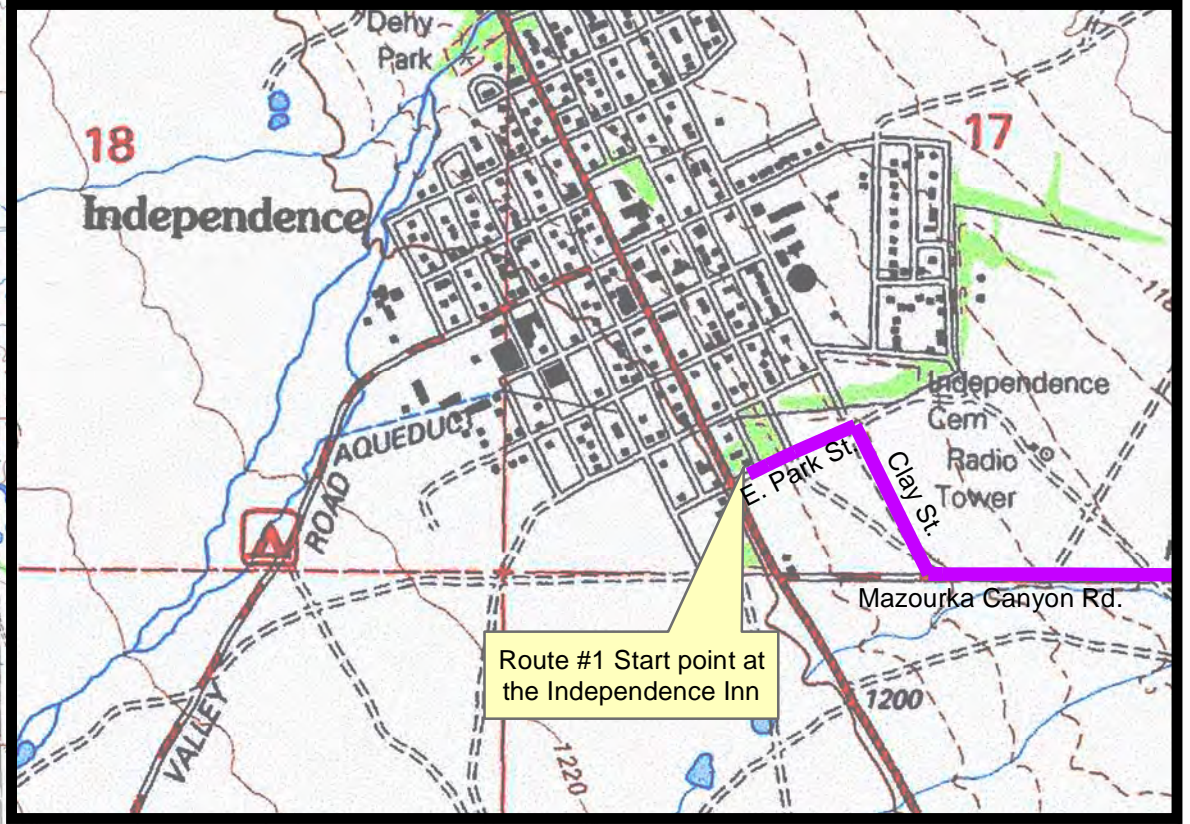


INYO COUNTY APPROVED COMBINED USE ROADS INDEPENDENCE AREA Opening Date: July 14, 2015



Route #1 Start point at the Independence Inn

Route #1 End point at BLM Rd. toward Betty Jumbo Mine



Route #1 Start point at the Independence Inn

OHV users on all combined-use routes must:

- Drivers must have in possession a valid driver's license of the appropriate class for the vehicle being operated
- Ride during daylight hours only and not earlier than 7:00 a.m. and no later than 8:00 p.m.
- Have an operational stoplight
- Have insurance in accordance with the provisions of Article 2 (commencing with Section 16020) of Chapter 1 of Division 7 of the California Vehicle Code
- Obey the posted speed limit for OHVs on combined-use roads and, in residential areas, drive no faster than 15 mph
- Use a vehicle that has rubber tires
- Pass at least three (3) feet away from bicyclists, horses, and pedestrians
- Slow to 5 mph when passing horses or pedestrians
- Ride only on existing trails
- Not stop in flowing water
- Drive in the middle of the vehicle lane
- Not drive on the shoulder
- Use existing trails when exiting a combined-use route
- OHV operators must operate the OHV in accordance with the vehicle manufacturer's recommendations for use of the vehicle
- For more information and to view project updates, visit <http://www.inyoltc.org/ab628impl.html>