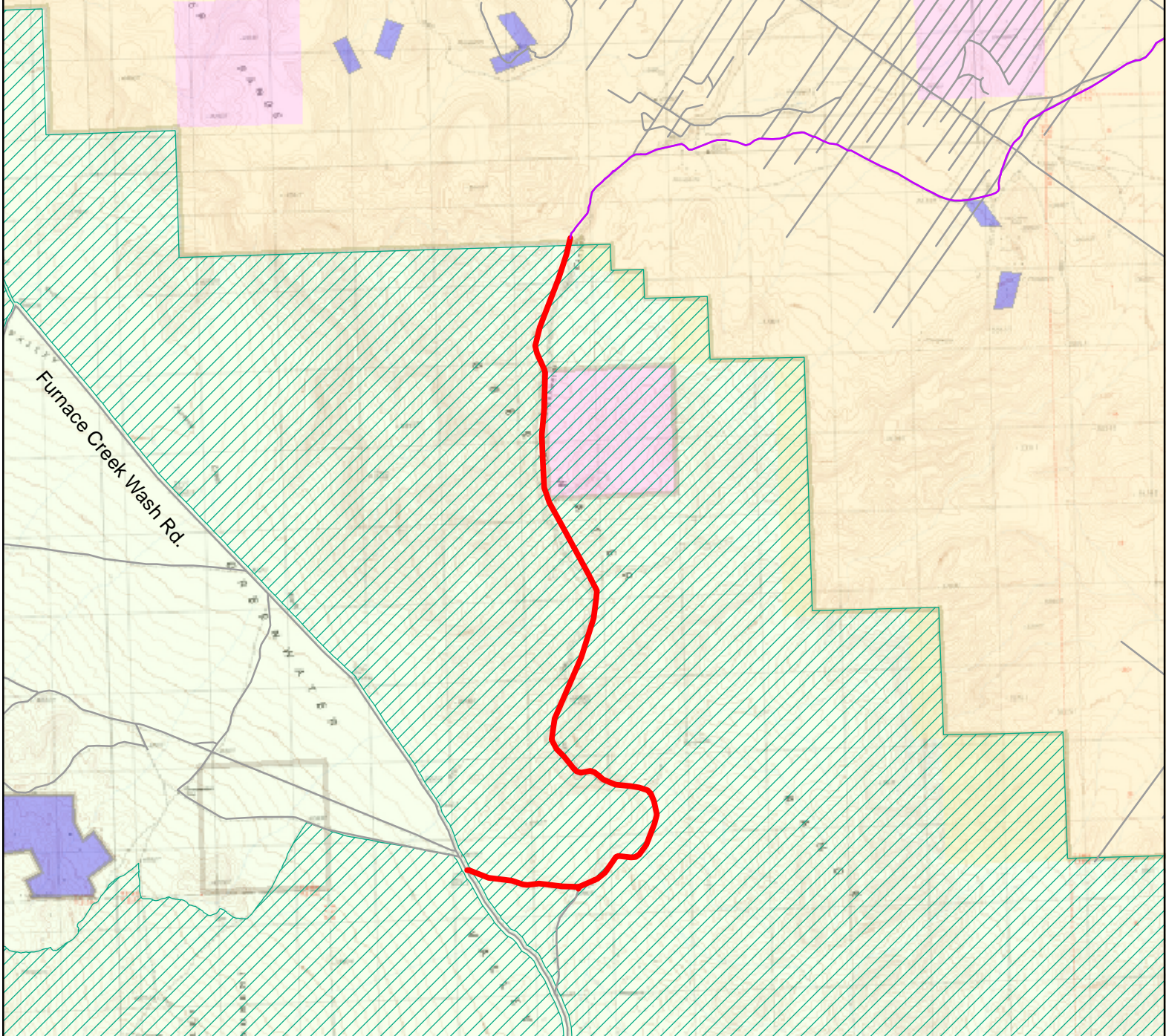


EXHIBIT 11

California Wilderness Coalition, Map, Inyo County Alleged Highway through Greenwater Canyon in Death Valley National Park Wilderness (Jan. 2007)

Inyo County Alleged Highway through Greenwater Canyon in Death Valley National Park Wilderness



Furnace Creek Wash Rd.

— Local Road	Land Owners
— Highway	■ Bureau of Land Management
— RS2477 Claims in Wilderness *	■ Private
— RS2477 Claims not in wilderness	■ State
▨ Designated Wilderness **	■ National Parks

0 0.7 1.4 2.1 Miles

* Routes digitized from Inyo County Complaint (Case1:06-cv-01502-AWI-DLB) filed 10/25/2006

** Wilderness boundaries were obtained by the National Park Service in draft format and may not be official

