



INYO COUNTY BOARD OF SUPERVISORS

TRINA ORRILL • JEFF GRIFFITHS • SCOTT MARCELLIN • JENNIFER ROESER • MATT KINGSLEY

NATE GREENBERG
COUNTY ADMINISTRATIVE OFFICER

DARCY ELLIS
ASST. CLERK OF THE BOARD



AGENDA

Board of Supervisors Room - County Administrative Center
224 North Edwards, Independence, California

NOTICES TO THE PUBLIC: (1) This meeting is accessible to the public both in person and via Zoom webinar. Individual Board members may participate remotely in accordance with applicable open meeting law requirements. In-person meetings will be conducted in accordance with local and State Department of Public Health orders and guidance and requirements of the California Division of Occupational Safety and Health (CalOSHA). The Zoom webinar is accessible to the public at <https://zoom.us/j/868254781>. The meeting may also be accessed by telephone at the following numbers: (669) 900-6833; (346) 248-7799; (253) 215-8782; (929) 205-6099; (301) 715-8592; (312) 626-6799. Webinar ID: 868 254 781. Anyone unable to attend the Board meeting in person who wishes to make either a general public comment or a comment on a specific agenda item prior to the meeting, or as the item is being heard, may do so either in writing or by utilizing the Zoom "hand-raising" feature when appropriate during the meeting (the Chair will call on those who wish to speak). Generally, speakers are limited to three minutes. Written public comment, limited to **250 words or less**, may be emailed to the Assistant Clerk of the Board at boardclerk@inyocounty.us. Your comments may or may not be read aloud, but all comments will be made a part of the record. Please make sure to submit a separate email for each item that you wish to comment upon.

(2) In Compliance with the Americans with Disabilities Act, if you need special assistance to participate in this meeting please contact the Clerk of the Board at (760) 878-0373 (28 CFR 35.102-35.104 ADA Title II). Notification 48 hours prior to the meeting will enable the County to make reasonable arrangements to ensure accessibility to this meeting. Should you because of a disability require appropriate alternative formatting of this agenda, please notify the Clerk of the Board 72 hours prior to the meeting to enable the County to make the agenda available in a reasonable alternative format. (Government Code Section 54954.2). (2) If a writing, that is a public record relating to an agenda item for an open session of a regular meeting of the Board of Supervisors, is distributed less than 72 hours prior to the meeting, the writing shall be available for public inspection at the Office of the Clerk of the Board of Supervisors, 224 N. Edwards, Independence, California and is available per Government Code § 54957.5(b)(1).

SPECIAL MEETING January 24, 2023

(Unless otherwise specified by time, items scheduled for either the morning or afternoon sessions will be heard according to available time and presence of interested persons.)

Start Time:

- 8:30 A.M.** 1) **Public Comment on Closed Session Item(s)**
Comments may be time-limited

CLOSED SESSION

- 2) **Conference with County's Labor Negotiators – Pursuant to Government Code §54957.6** – Regarding employee organizations: Deputy Sheriff's Association (DSA); Elected Officials Assistant Association (EOAA); Inyo County Correctional Officers Association (ICCOA); Inyo County Employees Association (ICEA); Inyo County Probation Peace Officers Association (ICPPOA); IHSS Workers; Law Enforcement Administrators' Association (LEAA). Unrepresented employees: all. County designated representatives – Administrative Officer Nate Greenberg, Assistant County Administrators Sue Dishion and Meaghan McCamman, Deputy Personnel Director Keri Oney, County Counsel John-Carl Vallejo, Senior Budget Analyst Denelle Carrington, Health and Human Services Director Marilyn Mann, and Chief Probation Officer Jeff Thomson.

- 3) **Conference with Legal Counsel - Anticipated Litigation** - Initiation of litigation pursuant to § 54956.9(d)(4): 2 potential cases. Facts and circumstances of Case 1: Coso Geothermal documentary transfer tax.

OPEN SESSION (With the exception of timed items, which cannot be heard prior to their scheduled time, all open-session items may be considered at any time and in any order during the meeting in the Board's discretion.)

- 9 A.M.**
- 4) **Pledge of Allegiance**
 - 5) **Report on Closed Session as Required by Law**
 - 6) **Public Comment**
Comments may be time-limited

REGULAR AGENDA - MORNING

- 7) **Department of Public Works: An Overview**
Public Works | Michael Errante
45 minutes (30min. Presentation / 15min. Discussion)

Recommended Action: Request Board receive a presentation from the Department of Public Works on departmental functions, responsibilities, and accomplishments.

- 11 A.M.**
- 8) **CalFire Public Hearing**
County Administrator - Emergency Services | Kristen Pfeiler
1 hr.

Recommended Action: Request Board hold public hearing on behalf of CalFire to receive input on updates to the Fire Hazard Severity Zone map for California.

LUNCH

- 9) The Board will recess for lunch at its convenience, with plans to reconvene at 1 p.m.

REGULAR AGENDA - AFTERNOON

- 10) **Department of Health and Human Services: An Overview**
Health & Human Services | Marilyn Mann, Anna Scott
1 hour (30 minute presentation/30 minute Discussion)

Recommended Action: Request Board receive a presentation from the Department of Health and Human Services on programming and services.



INYO COUNTY BOARD OF SUPERVISORS

TRINA ORRILL • JEFF GRIFFITHS • SCOTT MARCELLIN • JENNIFER ROESER • MATT KINGSLEY

NATE GREENBERG
COUNTY ADMINISTRATIVE OFFICER

DARCY ELLIS
ASST. CLERK OF THE BOARD



AGENDA ITEM REQUEST FORM

January 24, 2023

Reference ID:
2023-3458

Department of Public Works: An Overview

Public Works

NO ACTION REQUIRED

ITEM SUBMITTED BY

Nolan Ferguson, Assistant Engineer

ITEM PRESENTED BY

Michael Errante, Public Works Director

RECOMMENDED ACTION:

Request Board receive a presentation from the Department of Public Works on departmental functions, responsibilities, and accomplishments.

BACKGROUND / SUMMARY / JUSTIFICATION:

The Department of Public Works is comprised of ten primary divisions, including Airports, Building and Maintenance, Parks and Recreations, Water Systems, the Local Transportation Commission, Engineering, Solid Waste, Roads, Building and Safety, and Fiscal. Public Works houses 105 different employees who oversee all county roads, water systems, parks, buildings, landfills, airports, capitol improvement projects, and all of the associated costs and bills. The department handles a broad range of tasks, and maintains 25 independent budgets, the most out of any Inyo County department. This presentation will provide your Board with a general overview of the Department's function, major initiatives, key accomplishments, and current and future objectives and challenges.

FISCAL IMPACT:

Funding Source	N/A	Budget Unit	
Budgeted?	N/A	Object Code	
Recurrence	N/A		
Current Fiscal Year Impact			
Future Fiscal Year Impacts			
Additional Information			

ALTERNATIVES AND/OR CONSEQUENCES OF NEGATIVE ACTION:

OTHER DEPARTMENT OR AGENCY INVOLVEMENT:

None.

ATTACHMENTS:

1. Public Works 2023 Presentation

APPROVALS:

Nolan Ferguson	Created/Initiated - 1/19/2023
Darcy Ellis	Approved - 1/19/2023
Nolan Ferguson	Approved - 1/19/2023
Michael Errante	Approved - 1/19/2023
Breanne Nelums	Approved - 1/19/2023
John Pinckney	Approved - 1/19/2023
Nate Greenberg	Final Approval - 1/19/2023

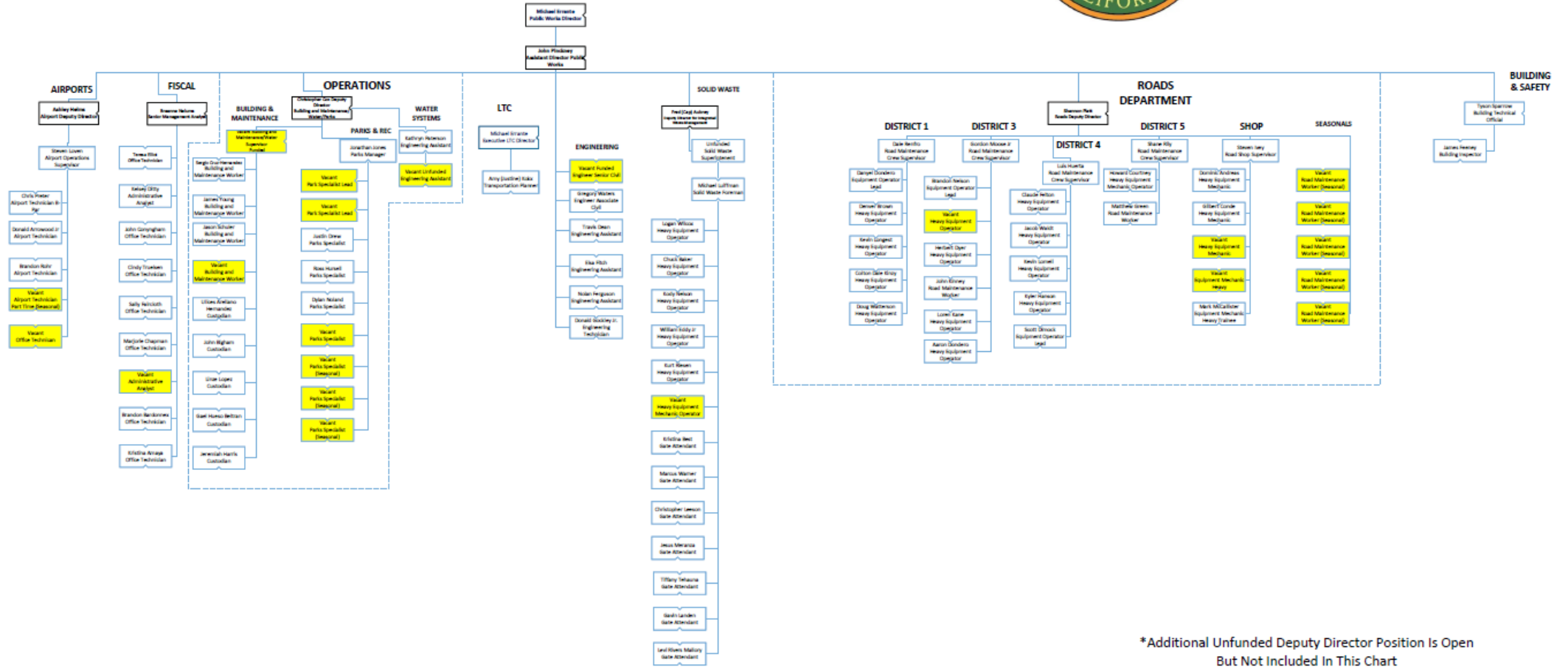
INYO COUNTY DEPARTMENT OF PUBLIC WORKS



Inyo County Department of Public Works Organizational Hierarchy



October 26, 2022

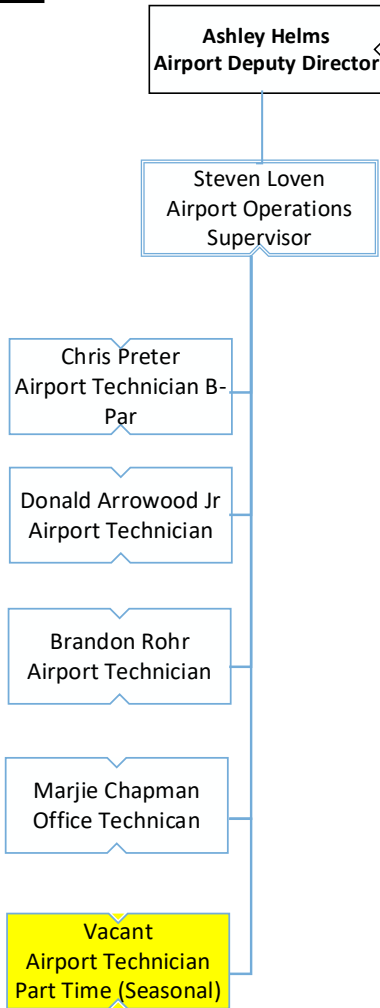


*Additional Unfunded Deputy Director Position Is Open
But Not Included In This Chart

An aerial, top-down view of an airport tarmac. A large white commercial airplane is the central focus, oriented vertically. To its left, a jet bridge is connected to the aircraft. Various ground support equipment, including service vehicles and trucks, are scattered around the plane. In the upper left, a parking lot contains several cars. The entire scene is overlaid with a semi-transparent dark grey filter, and a white rectangular box is centered over the image containing the word "AIRPORTS" in white, bold, sans-serif capital letters.

AIRPORTS

Staff



Locations

Eastern Sierra Regional Airport





The Airports Division oversees operations at four airports:

Bishop Airport

Scheduled passenger service with United Express began in Dec 2021.

Daily cargo operations and frequent military activity
42 T-hangars and 3 commercial hangars, with a vibrant general aviation community

Independence Airport

General aviation airport with USFS/BLM Fire Base

Lone Pine / Death Valley Airport

General aviation airport with 16 hangars and a growing community of engaged local pilots

Newly created non-profit Friends of the Lone Pine Airport

Skydiving lessons recently availability

Yearly Fly in and camp events for local pilots

Shoshone Airport

Small GA airport

New \$850,000 Airport Fire Truck Paid For 100% by FAA grant.





UPCOMING PROJECTS

Bishop Airport:

Runway 12-30 Safety Area Improvement Project
(2024)

Airport Master Plan Update (2024)

Lone Pine / Death Valley Airport:

Taxiway Rehabilitation Project (2023)

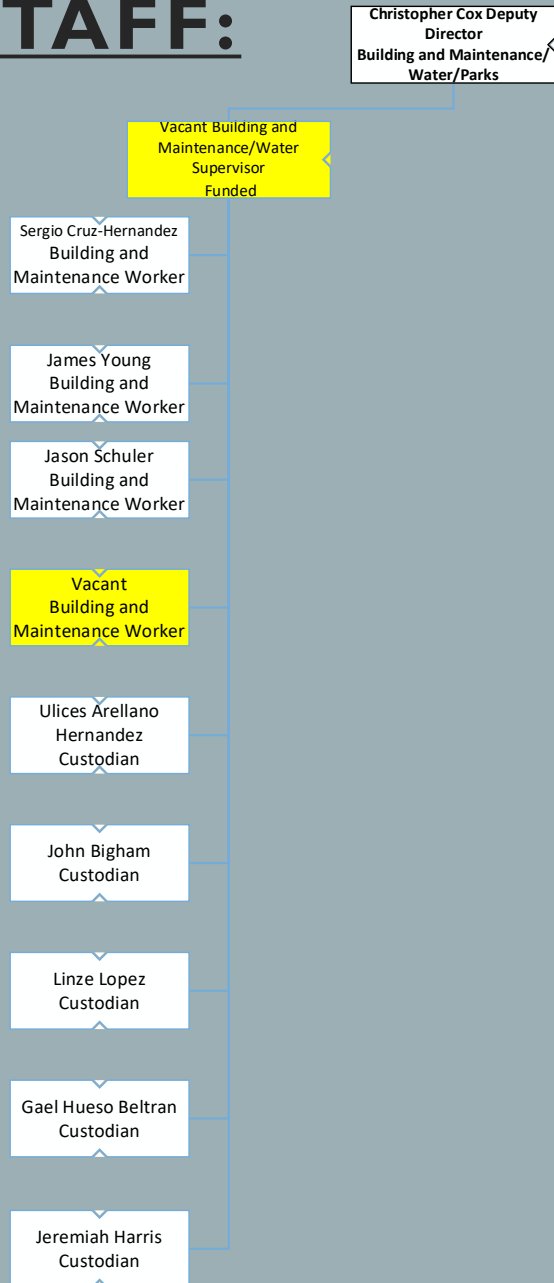
Independence Airport:

Runway 14-32 Rehabilitation Project (2025)

An aerial photograph of a demolition site. A yellow excavator is positioned at the top center, working on a large, multi-story building that is being dismantled. The building's structure is exposed, showing concrete and steel beams. The ground is covered in debris, including wooden planks, metal scraps, and other construction materials. A white rectangular box is overlaid on the center of the image, containing the text "BUILDING & MAINTENANCE".

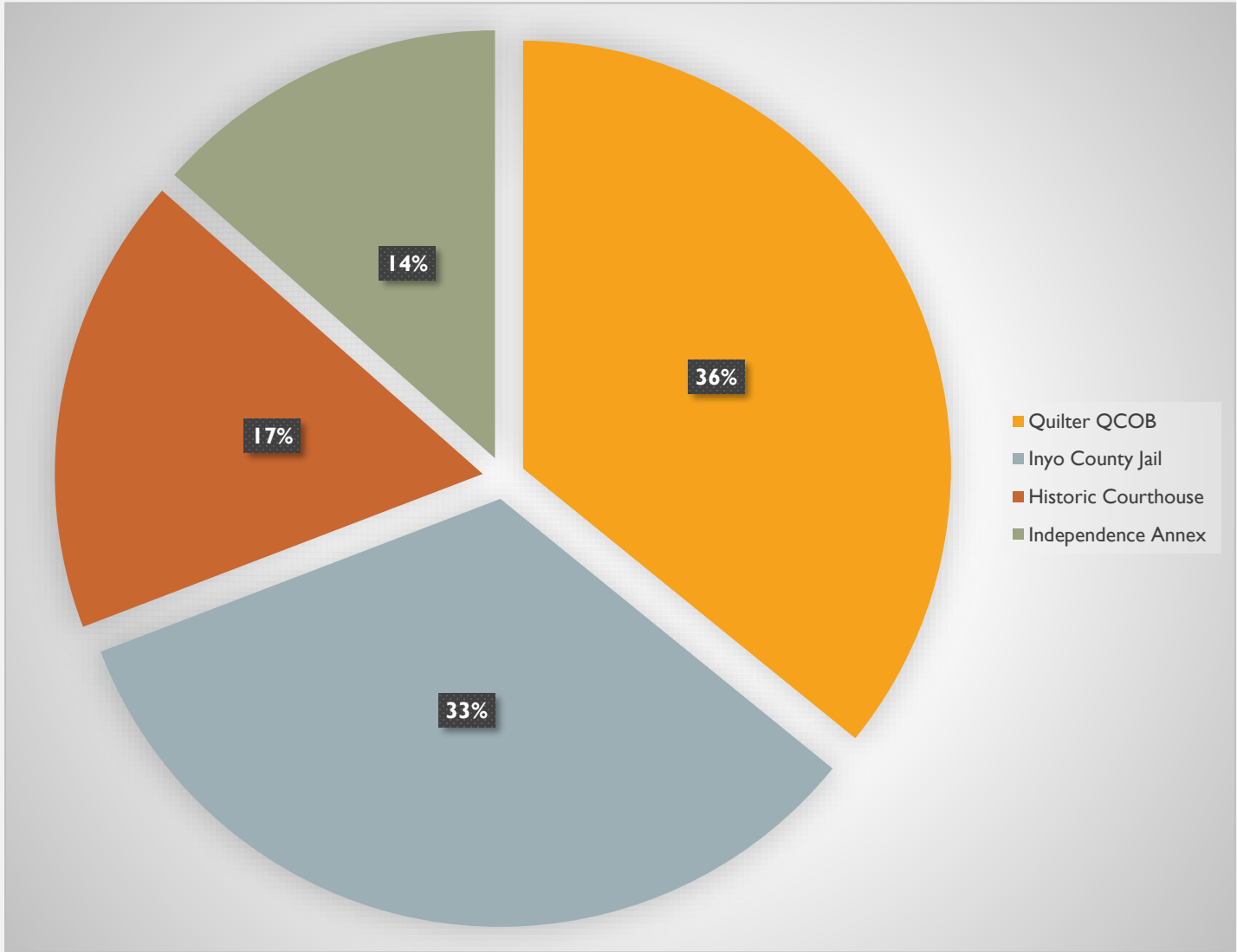
BUILDING & MAINTENANCE

STAFF:



Building and Maintenance

- The Building and Maintenance Department Provides maintenance services for the offices of the courts in Bishop and Independence and maintain a total of 53 different facilities.
- Provide Janitorial services and supplies for most County owned facilities and portions of leased buildings.
- Maintains the grounds wall county facilities including the Independence campus, the Jail, Juvenile facility, Museum, Commander's House, Edwards' House, Water Department and the Clint Quilter County Consolidated Office Building in Bishop.
- Provide repair, maintenance, and support for Inyo County Water Systems. Provide 24/7/365 support for all County facilities and personnel.
- Answers over 1200 Maintenance requests a year.
- Performs various building improvements that cannot be contracted to outside vendors.



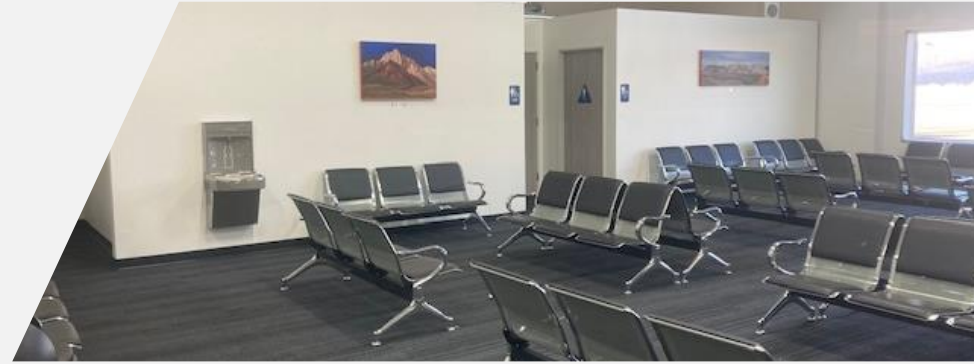
Of the 1200 yearly work orders received, the top four locations requesting include.

- QCOB
- Inyo County Jail
- Historic Courthouse
- Independence Annex Building

Top four locations that receive work order submittals.



New Safety Guardrails for the Ag building mezzanine were installed by B&M.



The B&M Team did a bulk of the work involved in the Bishop Airport Terminal Remodel.



New Fence Installed at Progress House in Bishop.



The bathroom at Bishop Senior Center was remodeled to comply with ADA Standards.



The B&M Team built and installed the new security panels in the office of the auditor.



The Treasurer Tax Collector Offices were remodeled by B&M staff.

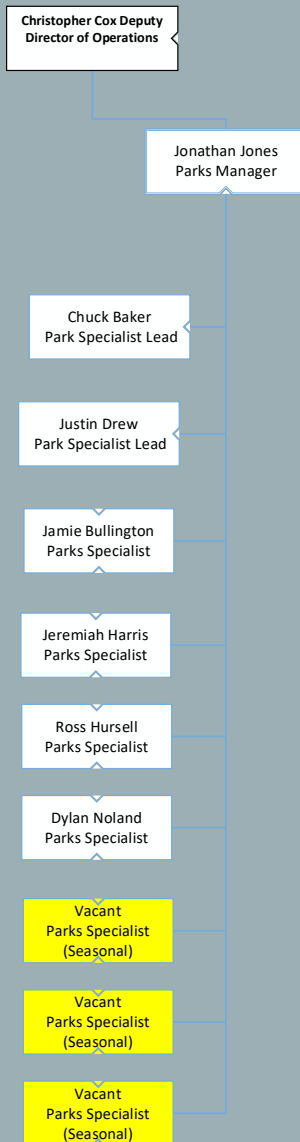


The Building and Maintenance Department maintains all county buildings including the Courthouse and the New County Office Building in Bishop.



PARKS AND RECREATIONS

STAFF:



Parks and Recreations operates a regional and neighborhood parks system serving both visitors to the County as well as residents. Recreational facilities include lakes, campgrounds, picnic areas, playgrounds and ballfields.

Parks

- Tecopa Hot Springs Park
- Spainhower Park (Lone Pine Park)
- Independence Park
- Independence Baseball Fields
- Dehy Park
- Mendenhall Park
- Izaak Walton Park
- Starlite Park

Campgrounds

- Diaz Lake Campground
- Portuguese Joe Campground
- Independence Creek Campground
- Taboose Creek Campground
- Tinnemaha Creek Campground
- Baker Creek Campground
- Millpond Recreation Area
- Pleasant Valley Campground

Parks and campgrounds span across the entire county, from Tecopa to Bishop.

Seven Full Time Employees (FTEs) and Three Seasonal Employees are responsible for maintaining all of these in addition to improvements made to any of the locations.



Diaz Lake Campgrounds



Millpond Campgrounds



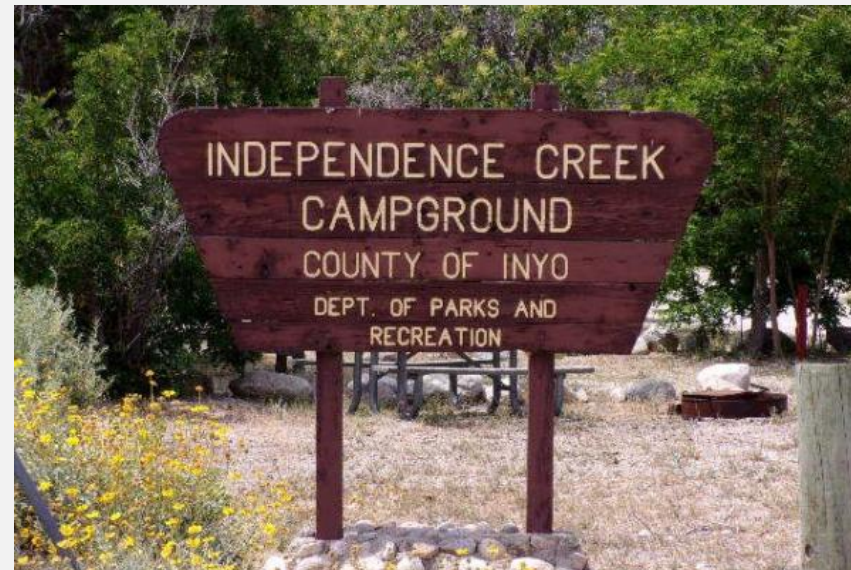
Portuguese Joe Campgrounds



Dehy Park (Independence)



Spainhower Park (Lone Pine)



Independence Creek
Campground

A photograph of a water system with brown pipes and a pressure gauge. The pipes are set against a dark blue background. A white rectangular box is overlaid on the image, containing the text 'WATER SYSTEMS'.

WATER SYSTEMS

STAFF:

Christopher Cox Deputy
Director
Building and Maintenance/
Water/Parks

Kathryn Paterson
Engineering Assistant

Vacant Unfunded
Engineering Assistant

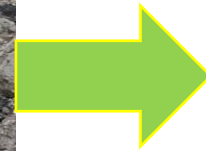
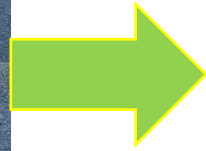
The Public Works Department operates and maintains a level two water distribution system in Independence, Lone Pine and Laws.

There are Currently:
515 Connections in Lone Pine
337 Connections in Independence
14 Connections in Laws.

Due to lack of staff, the water department uses other resources within the county such as the roads department and Building and Maintenance to fix leaks and solve problems that occur.

The department has one full time employee that oversees maintenance of distribution mains and laterals, water wells across the county, Data acquisition equipment (SCADA), hydrant maintenance and customer payments.

As of November 22nd, The Water Systems department has acquired a grant for \$558,000 to upgrade and replace water meters to smart meters.



October 1 2022 Water Leak on Mountain View and Hay in Lone Pine.



LOCAL TRANSPORTATION COMMISSION

STAFF: LTC

Michael Errante
Executive LTC Director

Amy (Justine) Kokx
Transportation Planner

Brandon Bardonex
Commission Secretary

The Inyo County Local Transportation Commission is a six-member commission that serves as the State mandated Regional Transportation Planning Agency (RTPA). The LTC staff administers Inyo County Local Transportation Meetings and works to secure future revenue and funding streams for transportation projects in Inyo County. The LTC also has over-sight of and administers transit funding in Inyo County. The LTC funds transportation planning and development for Inyo County and the City of Bishop.

COMMISSIONERS:

Celeste Berg

Doug Thompson

Jennifer Roeser

Scott Marcellin

Stephen Muchovej

Jose Garcia



Eastern Sierra Transit Agency Bus
(Funded by LTC).

Public Works houses the LTC, Provides fiscal services, staffing and oversight.

The Primary functions of the LTC are to:

1. Administer Transit funding.
2. Develop and implement a Regional Transportation Plan.
3. Prepare and Implement an Overall Work Plan to secured planning funds.
4. Review and comment on the State Transportation Implementation Plan.
5. Prepare and submit for approval a Regional Transportation Improvement Plan.
6. Review, prepare and submit grant applications for various funding opportunities.

LTC Accomplishments:

- Tri-county MOU Negotiations
- South Lake Road Reconstruction Funding.
- Lone Pine ATP-ADA Sidewalk Project.
- State Line Road Reconstruction FLAP Grant Approval
- Olancho-Cartago 4 Lane Project Funding
- Whitney Portal Road Reconstruction.
- 2022 RTIP
- 2019 RTP/2023 Update
- 2015 ATP/2023 ATP Update
- Monthly Mtgs
- Transit Performance Audits
- Combined Use/Adventure Trails State Park Grant.
- East Line St. Bridge Funding.



Shoshone Slurry Seal.

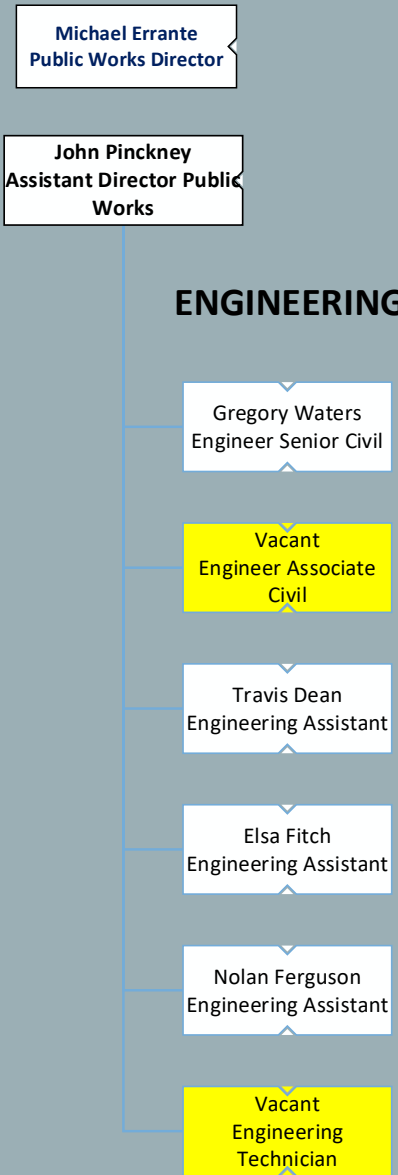


Shoshone Airport Crack Sealing



ENGINEERING

STAFF:



The Engineering Department directs the work or personally performs the work involved in the planning, design, surveying, and/or construction of public works projects including:

- Roads
- Bridges
- Structures
- Maintenance of Facilities
- Airports
- Rights-of-way
- Utility systems
- Lighting Districts
- Pavement Management
- Traffic Studies
- Related systems

The Inyo County Engineering Department consists of six engineers who are responsible for managing and delivering over Five Million dollars worth projects for this Fiscal Year.



Lake Diaz ADA Boat Dock (Completed December 14th 2022)



Lake Diaz ADA Boat Dock (Completed December 14th 2022)



North Round Valley Bridge Girder Set (Project Ongoing)



North Round Valley Bridge Girder Set (Project Ongoing)

NORTH ROUND
VALLEY BRIDGE
TIME LAPSE



South Lake Road Replacement

Before

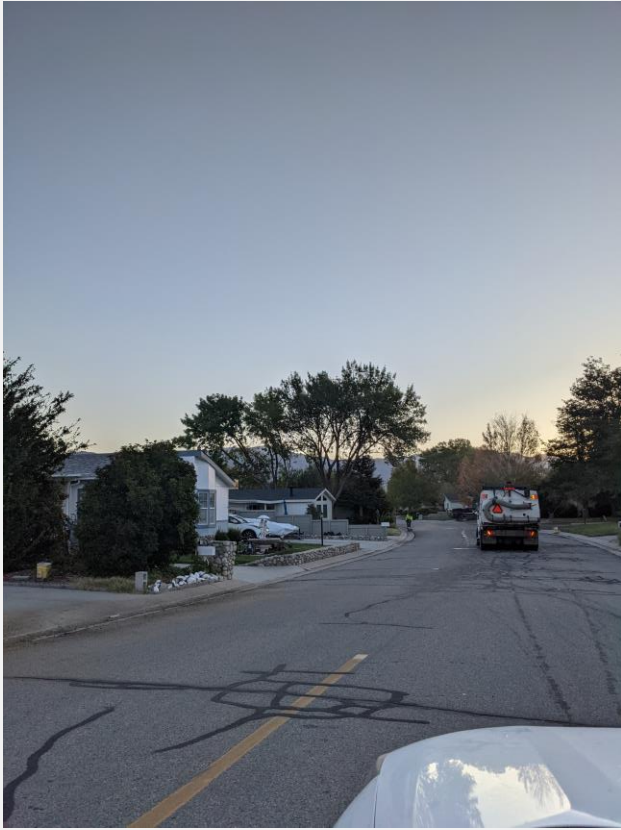


After



With the help of the LTC, Inyo County was able to win a Federal Land Access Program (FLAP) Grant to repave South Lake Road. The project was managed by Inyo County Engineering Staff and was completed in 2020.

Grandview and Knight Manor Road Slurry Seal



Before



During Application



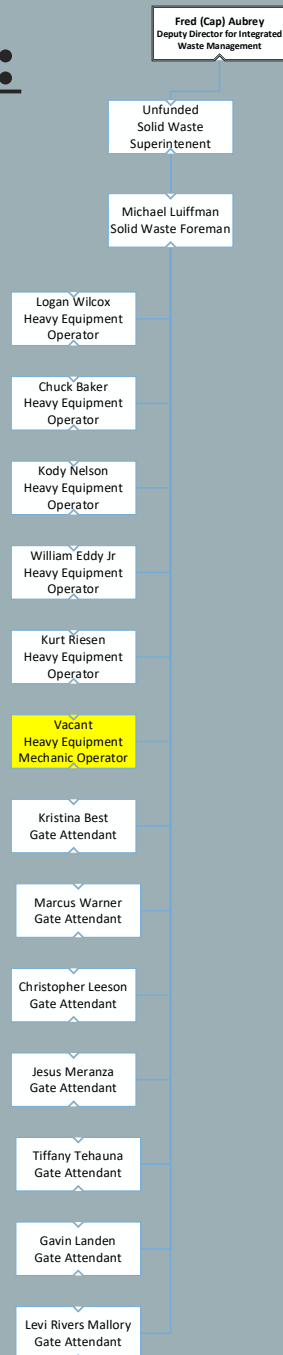
Finished and Drying

In October 2022, Inyo County Engineering Department oversaw the application of a Slurry Seal to preserve the roads in the Knight Manor housing Trak of Big Pine, the Grandview housing Trak of Bishop, the Office of Education in Independence and the Administrative Parking Lot in Independence.

SOLID WASTE



STAFF:



The County's solid waste disposal facilities and transfer stations are operated and maintained by Inyo County Public Works. The county operates and maintains three landfills and transfer stations across the county. It also provides the continuing maintenance of three inactive landfills.

Landfills

- Bishop-Sunland Landfill
- Independence Landfill
- Lone Pine Landfill

Transfer Stations

- Big Pine
- Olancha
- Keeler
- Homewood Canyon
- Darwin
- Tecopa/Shoshone

Locations

Landfill and Transfer Station (TS) Locations

Bishop-Sunland Landfill

Big Pine TS

Independence Landfill

Lone Pine Landfill

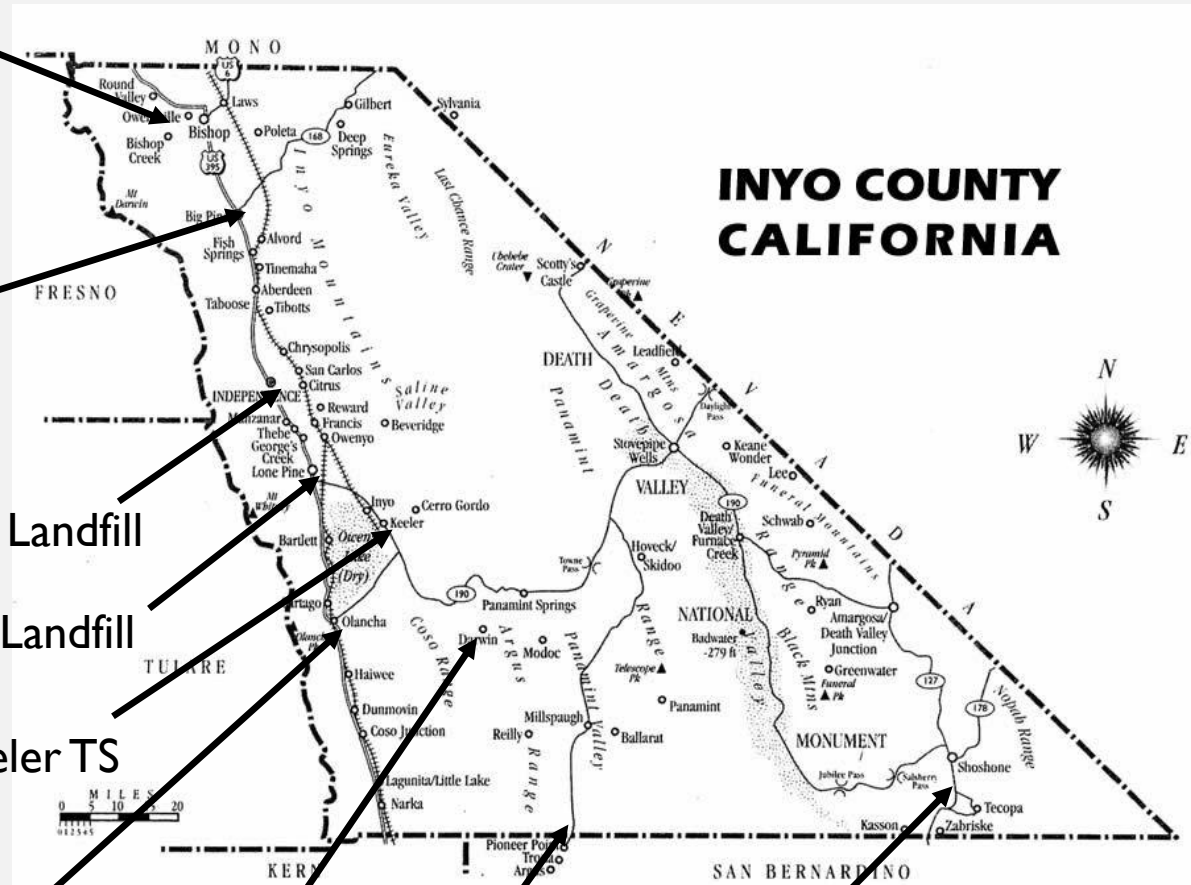
Keeler TS

Olancha TS

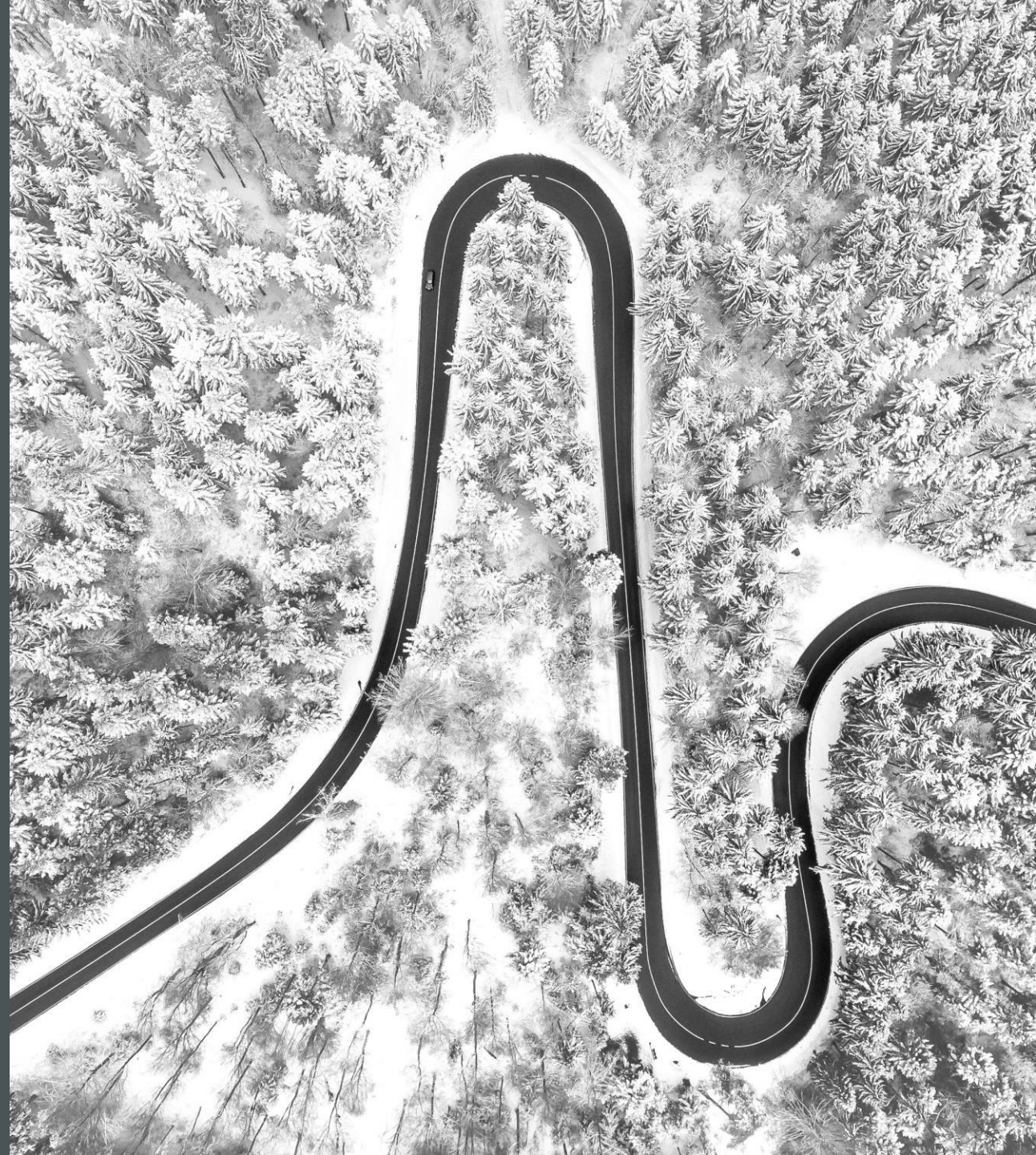
Darwin TS

Tecopa/Shoeshone TS

Homewood Canyon TS



ROADS





January Snow Plowing on Inyo County Roads

-Road Division is responsible for the oversight of an approximately ten-million-dollar budget and has 27 dedicated roads crewmen

-Currently Inyo County maintains 1095 miles of roadway, a combination of approximately 600 miles paved and over 400 miles gravel.

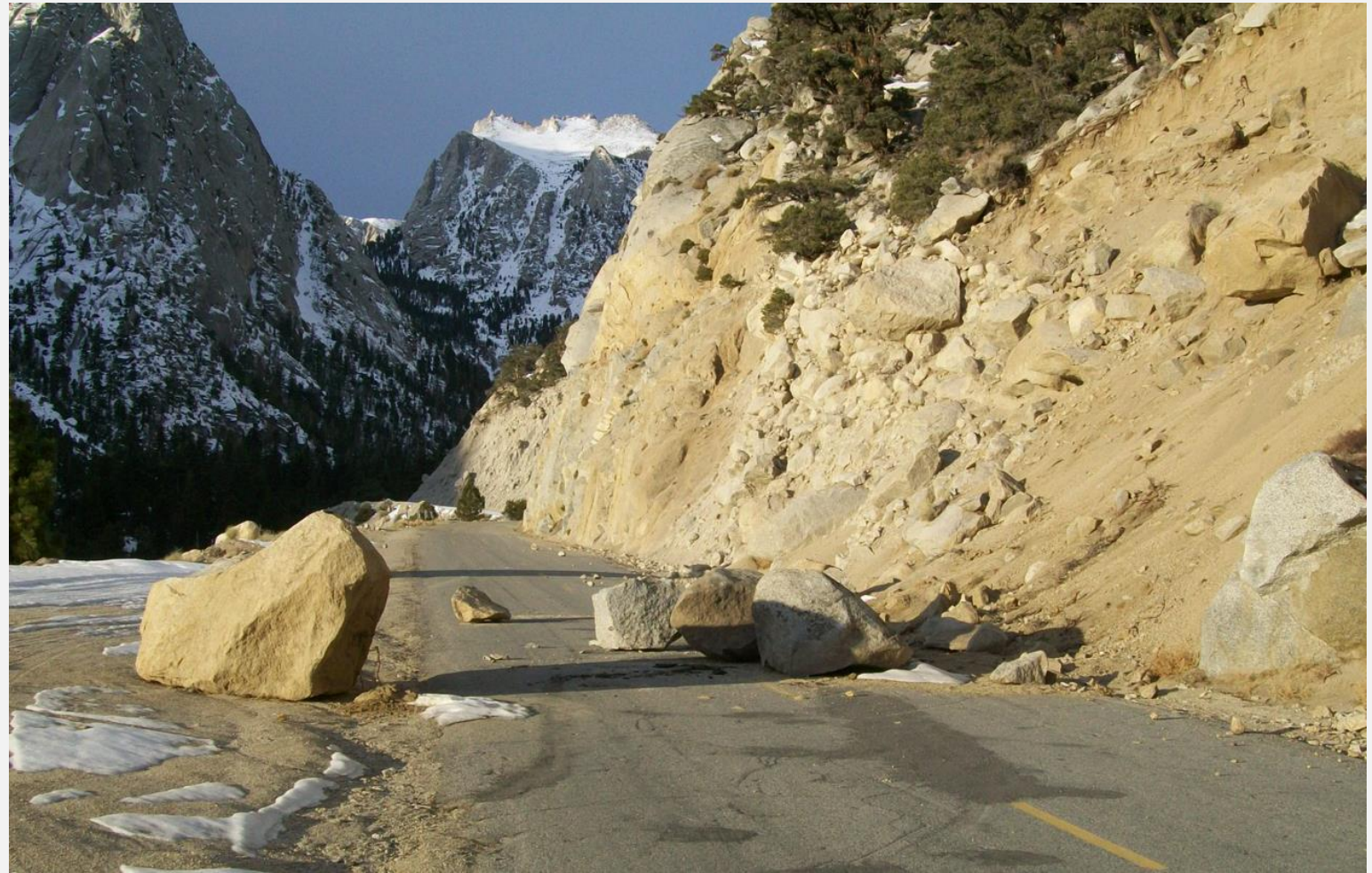
-All this roadway has maintenance needs such as patching, pruning, and grading that the Roads Department handles.

-The Roads Department also maintains all the road signage and the underground drainage structures that many do not even realize are there.

-During the Winter season, the roads crew handles snow plowing for all county roads in addition to standard maintenance.



N Round Valley Road Culvert Replacement



Rock Slide on Whitney Portal Road



Pine Creek Road Flooding



Grading Surprise Canyon



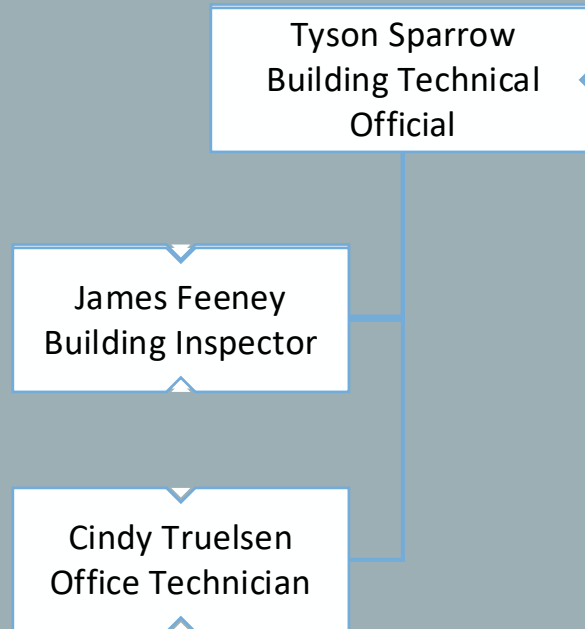
Snow conditions can get extreme in some section of the County, and the Roads Department needs to be able to keep them plowed for residents.

BUILDING AND SAFETY



STAFF:

BUILDING & SAFETY



What we do:

Building and Safety safeguards the community we serve and helps preserve public health, safety and welfare through effective application of building codes and regulations.

Our mission to help:

Building and Safety excels at helping people navigate the building process through highly professional, knowledgeable, and customer service orientated staff.

Our team working for our community:

Public Safety, Sustainability, Customer Service, Professionalism, Teamwork, Integrity, Accountability and Transparency.

Tasks:

Customer Service

Development Standards

Building Permits / Project Approval Process

Plan Review

Wildland Urban Interface / Fire Prevention Guidelines

Public Records Request

Research / Continuing Education

Extensions

Building to Code (Code Compliance) / Building Requirements

Building Safety Precautions (Fire, Electrical, Gas etc.)

Working with Asbestos Control Bureau

Contractor Verification / Appropriate Classification for Work / License Verification

Carbon Monoxide Requirements

Fiscal Responsibility: Department Budget Review/Entry and

Submission, Accounts Receivable, Accounts Payable

Reporting to State of California Standards Commission

Reporting to Dept. of Conservation

Coordinate plan review with other Departments; Planning,

Environmental Health, Fire Dept.

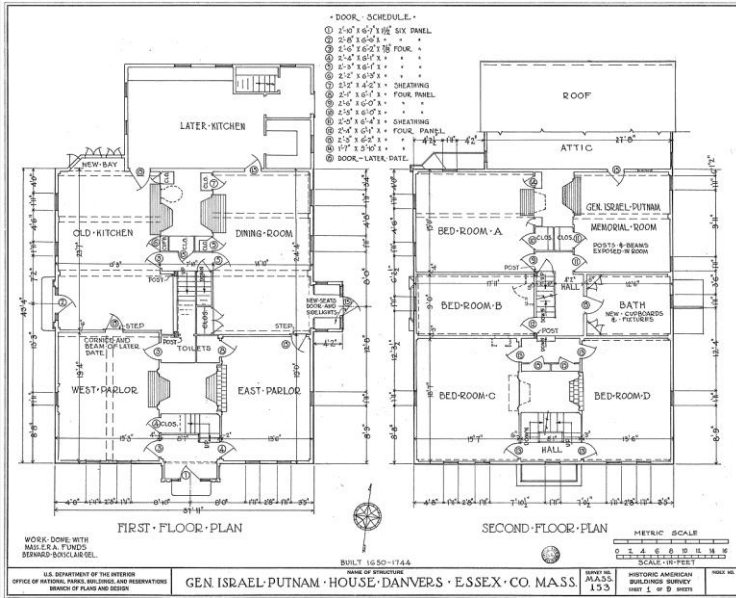
Inspections / Inspection Requests / Inspection Scheduling

We cover the entire county: Inyo County Travel / Long Distance

Inspections: Sandy Valley, Furnace Creek, Death Valley, Shoshone

Things We Oversee:

- All Construction: Commercial and Residential
- New Structures: Homes, Garages, Shops, Mobile/Modular Installation, Commercial Buildings
- Guest House / Construction of an Accessory Dwelling / Tiny House / Pool House / Cabana
- Additions and Alterations / Remodel
- Roof and Ground Mount Solar
- Patio Covers / Enclosed Patios / Sheds / Storage Containers / Carports / Barns
- Temporary Power
- Electric Charging Stations
- Pools and Spas
- Retaining Walls over 4 Ft.
- Electrical, Plumbing, Mechanical and Structural Repairs
- Re-Roof / Stucco / Siding
- Temporary Structures
- Demolition
- Wall or Monument Signs
- Tenant Improvements / Capital Improvements
- Sprinklers / Back-Flow
- Fire Sprinklers
- Air Conditioning Units/ HVAC
- Water Heaters
- Gas Lines
- Hood / Exhaust
- Shower Pan / Shower Tub Installation
- Wood Burning Stove/ Pellet Insert / Fireplace
- Permanent Foundation / Rebar / Footing
- Bond Beam
- Ridge Bolting / Piers
- Trusses
- Sewer Lateral
- Water Line
- Drywall / Drywall Nailing / Plywood Nailing / Sheer Nailing
- Framing
- Sub Floor / Floor Nailing
- Insulation
- Windows
- Cell Towers / Cell Antennas
- Anything that changes the footprint of the original square footage
- Adding or moving a load bearing wall
- Altering a roofline
- Creating a new door or window opening
- Replacing an electric stove with a gas stove



Plan Check

Building Permit Application

Inyo County
377 West Line Street, Bishop, California 93514
760-873-7857 ciroisen@inyocounty.us
www.inyocounty.us

Project Address: _____ APN: _____

Contractor: _____ Owner: _____

Address: _____ Address: _____

City, State, Zip: _____ City, State, Zip: _____

Phone #: _____ Phone #: _____

License #: _____ Fax #: _____

Architect: _____ Engineer: _____

Address: _____ Address: _____

City, State, Zip: _____ City, State, Zip: _____

Phone #: _____ Phone #: _____

Fax #: _____ Fax #: _____

License #: _____ License #: _____

Project Coordinator / Contact Person (if different from above)

Name: _____ Phone #: _____

Project Description (be specific): _____

Short Desc: _____

Value of work: _____

Applicant understands that this permit expires and becomes null and void should work not be commenced within 180 days from date of issue, or should construction be suspended or abandoned for a period of 180 days. Applicant certifies that the information provided herein is correct to the best of their knowledge and agrees to comply with all City and state laws relating to building construction and hereby authorizes representatives of the City to enter upon the project property for inspection purposes.

Applicant name: _____

Signature: _____

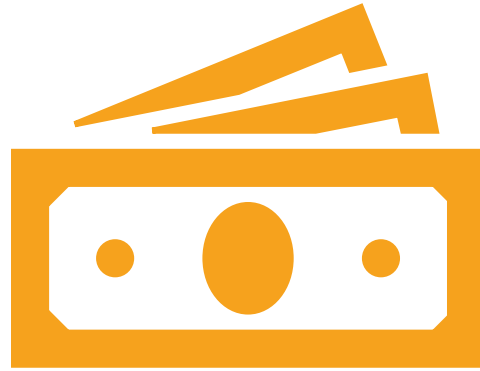
Permit Cost Summary			Permit #
Building Permit	\$	-	Date
Plan Check	\$	-	Approved By
Plumbing Permit	\$	-	Con Type
Mechanical Permit	\$	-	Occ Grp
Electrical Permit	\$	-	Total SQ FT
Other	\$	-	Zoning
Relocation	\$	-	WM Form
Demolition	\$	-	Plan Check
Jazzuzi	\$	-	Health Dept
Storage Container	\$	-	School Fees
Continuing Education	\$	-	Cal Fire
Mobile Home	\$	-	Sewer Dist
Grading	\$	-	Total
Solar	\$	-	Receipt #
SNIP	\$	-	
Building Standards Revolving Fund	\$	-	

Permit issuance



Inspection

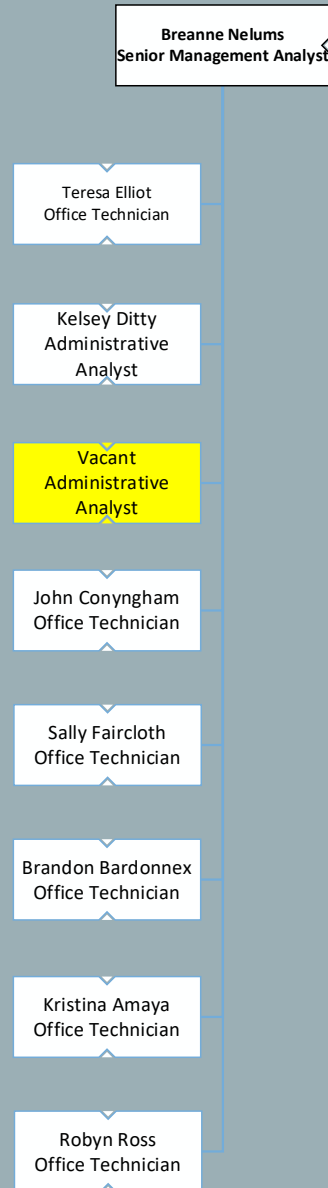
All Building Permits undergo the same steps, and across the county, two building officials handle the entire process from start to finish for over 500 permits a year.



FISCAL

STAFF:

FISCAL



- Preparation and completion of budgets and budget plans including anticipated revenues and expenditures for 25 departmental budgets across 10 divisions
- Grant oversight with expenditure claiming
- Expenditure processing and tracking for all 25 budgets and 10 divisions
- Revenue processing and tracking for all 25 budgets and 10 divisions
- Contract management and tracking for all Public Works projects across all divisions
- Process water systems billings for over 865 customer
- Process departmental payroll
- Recruitment and hiring tracking for 100+ employees
- Issue and Reconcile all Accounts Receivable for Road Reimbursable Projects and receipt in Revenues
- Compile reports and data to assist the State Controller's auditor with the preparation of the Road Departments Annual Road Report as well as County wide audit
- Track all costs associated with Road assistance on storm damage projects
- Track all monthly associated facility and departmental costs. Fiscal currently oversee 80+ facilities and over 150 departments as well as all bills associated with those facilities and departments.



INYO COUNTY BOARD OF SUPERVISORS

TRINA ORRILL • JEFF GRIFFITHS • SCOTT MARCELLIN • JENNIFER ROESER • MATT KINGSLEY

NATE GREENBERG
COUNTY ADMINISTRATIVE OFFICER

DARCY ELLIS
ASST. CLERK OF THE BOARD



AGENDA ITEM REQUEST FORM

January 24, 2023

Reference ID:
2023-3455

CalFire Public Hearing County Administrator - Emergency Services NO ACTION REQUIRED

ITEM SUBMITTED BY

Kristen Pfeiler, Wildfire Preparedness Coordinator

ITEM PRESENTED BY

Kristen Pfeiler, Wildfire Preparedness Coordinator

RECOMMENDED ACTION:

Request Board hold public hearing on behalf of CalFire to receive input on updates to the Fire Hazard Severity Zone map for California.

BACKGROUND / SUMMARY / JUSTIFICATION:

The Office of the State Fire Marshall has launched a public comment period for the regulatory adoption process to update the existing map that captures Fire Hazard Severity Zones (FHSZ), which is a comprehensive map that ranks California's State Responsibility Area (SRA)—or rural, unincorporated areas—based on the likelihood different areas will experience wildfire.

After years of work to develop a sound scientific basis and methodology with a range of experts and stakeholders, updates to this map bring this valuable tool and statutory requirement current in a way that accurately reflects today's reality for wildfire hazard throughout the state.

CalFire is holding a series of public hearings in every county with SRA pursuant to PRC 4203. At the hearings, any person may present comments, orally or in writing, relevant to the proposed action described in the Informative Digest. Such information shall be retained by OSFM and shall be made available upon request.

FISCAL IMPACT:

Funding Source	N/A	Budget Unit	
Budgeted?	N/A	Object Code	
Recurrence	N/A		
Current Fiscal Year Impact			
Future Fiscal Year Impacts			
Additional Information			

ALTERNATIVES AND/OR CONSEQUENCES OF NEGATIVE ACTION:

OTHER DEPARTMENT OR AGENCY INVOLVEMENT:

None.

ATTACHMENTS:

1. Fire Hazard Safety Zone News Release

APPROVALS:

Darcy Ellis	Created/Initiated - 1/18/2023
Darcy Ellis	Approved - 1/18/2023
Kristen Pfeiler	Approved - 1/18/2023
Nate Greenberg	Final Approval - 1/18/2023

CAL FIRE NEWS RELEASE

California Department of Forestry and Fire Protection



CONTACT: CAL FIRE PIO
(916) 651-3473
@CAL_FIRE
calfire.dutypio@fire.ca.gov

RELEASE
DATE: 12/14/2022

CAL FIRE Releases Updated Fire Hazard Severity Zone Map for Public Comment, Will Host 57 Public Hearings throughout California

After years of planning and collaboration with fire scientists, firefighters, stakeholders, and local community partners, the new map reflects changes in fire hazard in unincorporated, rural areas, as experienced in California over past years.

Sacramento – CAL FIRE - Office of the State Fire Marshal this week will begin a public comment period for the regulatory adoption process to update the existing map that captures Fire Hazard Severity Zones (FHSZ), which is a comprehensive map that ranks California’s State Responsibility Area (SRA)—or rural, unincorporated areas—based on the likelihood different areas will experience wildfire.

After years of work to develop a sound scientific basis and methodology with a range of experts and stakeholders, updates to this map bring this valuable tool and statutory requirement current in a way that accurately reflects today’s reality for wildfire hazard throughout the state. More specifically, this process includes a few details to know below:

- **This current revision only updates areas in California’s unincorporated, rural areas where wildfires tend to be frequent**—called the “SRA” or “State Responsibility Area.” This does not include cities or large urban areas.
- **This process does not change rules or requirements for homes or properties in these areas** related to wildfire prevention, preparedness, and mitigation. The same requirements will remain regardless of whether a particular area is reclassified or not.
- **The last Wildfire Hazard Severity Zone map was updated in 2007 and required an update.** A lot has happened since 2007. Using the best available science with academic researchers and others, this updated map reflects the impacts of a changing climate and includes a variety of other key factors.
- **This is the beginning of a nearly two-month public process.** These maps are being shared for your comments and questions during the regulatory process. A total of 57 public hearings will be held throughout the state with the goal of hearing from you.
- **An online public toolkit and interactive map is available to help answer your questions.** Take some time to explore your address, read the FAQs, learn about the process and where to turn. A hotline is also available to help answer your questions directly and to help increase access.

“Ensuring Californians know the wildfire hazard in their area is critical to ensuring we all take the appropriate steps to prepare for wildfires,” said Chief Daniel Berlant, CAL FIRE Deputy Director of Community Wildfire Preparedness and Mitigation. “The updated map is the product of years of discussions and incorporates the latest science to provide a long-term outlook of an area’s wildfire hazard.”

CAL FIRE’s fire scientists and wildfire mitigation experts developed the map using a science-based and field-tested model that assigns a hazard score based on the factors that influence fire likelihood and fire behavior. Many factors are considered, such as fire history, existing and potential fuel (natural vegetation), predicted flame length, blowing embers, terrain, and typical fire weather for an area. These zones fall into the following classifications – moderate, high, and very high.

Working closely with the Department of Insurance and other agencies, CAL FIRE is creating a shared approach to further reduce wildfire risk that assists residents and businesses with accessing affordable insurance. The Department’s first-ever [report on climate insurance](#) recommended updated wildfire hazard mapping to improve public safety. Insurance companies and researchers, along with insurance agents and brokers, have been involved throughout this process to ensure cooperation between all sectors to better support Californians. And while insurance companies use similar methodologies to calculate risk as they price their insurance offerings to consumers, insurance risk models also incorporate many factors beyond this process, and many of these factors can change more frequently than those that CAL FIRE includes in its hazard mapping.

CAL FIRE remains committed to answering all questions from the public and working with the Department of Insurance, the insurance industry, and consumer groups throughout this process.

“Making California safer from wildfires is our top priority, and my Department of Insurance will continue to work closely with the first responders at CAL FIRE to better prepare our communities,” said Insurance Commissioner Ricardo Lara, who issued the [Safer from Wildfires](#) insurance framework with CAL FIRE and other agencies earlier this year as well as [finalizing his new regulation](#) to increase access to wildfire safety discounts and to ensure consumers can learn more about wildfire risks being considered by their insurance company. “Public education about where current wildfire hazards exist is essential to reducing the threat to local communities and maintaining access to affordable insurance. I encourage Californians to ask questions in this public process and to learn more about the tools that exist to help communities and governments reduce their local risks.”

Overall, the map shows increased fire hazard, reflecting California’s increase in wildfire occurrence and severity because of many factors, including a changing climate. The map has been updated to more accurately reflect the zones in California that are susceptible to wildfire, to help provide transparency for planning and preparedness efforts, and to provide communities a forecasting tool so that the public can take steps to prevent and prepare for wildfire. The hazard mapping process incorporates local climate data and changes in burn probability based on recent trends in fire occurrence. The model was reviewed and validated by members of the science community, as well as with outreach with various stakeholders including insurance, building, fire, and local agencies.

“Counties acknowledge the importance of accurately mapping fire hazard severity zones,” said Doug Teeter, Butte County Supervisor and Incoming Chair, Rural County Representatives of California. “RCRC member counties appreciate CAL FIRE’s continued engagement of local governments in this important effort.”

The State Fire Marshal is mandated by California Public Resource Code 4202-4204 to classify lands within the SRA into FHSZs and the most recent SRA FHSZ map was last updated in 2007. The FHSZ

zones are used for several purposes, including to designate areas where California’s defensible space standards, wildland-urban interface building codes, and the State Minimum Fire Safe Regulations are required. They can be a factor in real estate disclosure, and local governments may consider them in their general plan. However, officials stress it is important to note that within the SRA mitigation requirements already apply to all zones. A designation change for an area does not affect the legal requirements for mitigations since they are already required consistently across the SRA.

“As we continue to focus on addressing California’s housing crisis, we support the importance of building so that structures are safely designed and built to mitigate an area’s wildfire hazard,” said Dan Dunmoyer, President and CEO of the California Building Industry Association. “To build more fire safe communities in the future, it is critically important for CAL FIRE to update these maps to ensure we all can take steps to build a more resilient California.”

Ways to stay informed and join the conversation

As part of the adoption process of the map, CAL FIRE invites public comment on the proposed map between December 16, 2022, and February 3, 2023. The public may submit written comment at the address below or through email at FHSZcomments@fire.ca.gov. In addition, CAL FIRE will host a public comment hearing in all 56 counties that have SRA to receive public comment. Information on the hearings can be found on CAL FIRE’s website at osfm.fire.ca.gov/FHSZ.

Written comments may be submitted by U.S. mail to the following address:

Office of the State Fire Marshal
C/O: FHSZ Comments
California Department of Forestry and Fire Protection
P.O. Box 944246
Sacramento, CA 94244-2460

To determine the FHSZ of a property, the public can easily search an address using a new FHSZ Viewer at osfm.fire.ca.gov/FHSZ.

In order to help California residents better understand the FHSZ map and answer questions, CAL FIRE has created a public toolkit on its website to include new and easy to follow sections, including maps, frequently asked questions, and an automated “hotline” to contact for specific information. The new website also includes dates, times, and locations of FHSZ public hearings that will be held in the 56 Counties that have FHSZs within the SRA. For information about FHSZs, visit the program’s website at osfm.fire.ca.gov/FHSZ. The public can also call an automated hotline at (916) 633-7655.

Following the adoption of the SRA FHSZ Map, CAL FIRE - Office of the State Fire Marshal will begin providing local governments updated FHSZ maps for Local Responsibility Areas. Under California Government Code 51178, the State Fire Marshal is required to provide local agencies with the areas within their jurisdiction that meet FHSZ criteria for their local adoption and implementation.

###



INYO COUNTY BOARD OF SUPERVISORS

TRINA ORRILL • JEFF GRIFFITHS • SCOTT MARCELLIN • JENNIFER ROESER • MATT KINGSLEY

NATE GREENBERG
COUNTY ADMINISTRATIVE OFFICER

DARCY ELLIS
ASST. CLERK OF THE BOARD



AGENDA ITEM REQUEST FORM

January 24, 2023

Reference ID:
2023-3399

Department of Health and Human Services: An Overview Health & Human Services

NO ACTION REQUIRED

ITEM SUBMITTED BY

Marilyn Mann, HHS Director

ITEM PRESENTED BY

Marilyn Mann, HHS Director, Anna Scott, HHS Deputy Director - Public Health

RECOMMENDED ACTION:

Request Board receive a presentation from the Department of Health and Human Services on programming and services.

BACKGROUND / SUMMARY / JUSTIFICATION:

The Department of Health and Human Services is comprised of four primary divisions, housing a wide range of both mandated and non-mandated services and programs. The Behavioral Health division provides mental health and substance use disorder treatment services; Public Health and Prevention houses public health services as well as WIC, First 5, Tobacco Education programming and other prevention programs; Aging and Social Services includes Child Protective Services, Adult Protective Services, In-Home Supportive Services, Employment and Eligibility (public assistance programs), and Senior Services; and our Fiscal Oversight and Special Operations provides oversight of our 22 budgets, as well as oversight of our mandated emergency/disaster readiness and response functions in public health and social services, innovations and grant management, and our housing support programming, including administration of the Continuum of Care (CoC). This presentation will provide your Board with a broad-stroke overview of the Department's mission, how it is financed, major initiatives, key accomplishments, and current and future objectives and challenges.

FISCAL IMPACT:

Funding Source	N/A	Budget Unit	
Budgeted?	N/A	Object Code	
Recurrence	N/A		
Current Fiscal Year Impact			
None			
Future Fiscal Year Impacts			
None			
Additional Information			
None			

ALTERNATIVES AND/OR CONSEQUENCES OF NEGATIVE ACTION:

N/A

OTHER DEPARTMENT OR AGENCY INVOLVEMENT:

None

ATTACHMENTS:

1. BOS Presentation- HHS Overview

APPROVALS:

Marilyn Mann	Created/Initiated - 1/10/2023
Darcy Ellis	Approved - 1/10/2023
Anna Scott	Approved - 1/10/2023
Nate Greenberg	Approved - 1/18/2023
Marilyn Mann	Final Approval - 1/19/2023



HEALTH AND HUMAN SERVICES

STRENGTHENING RESILIENCE AND WELL-BEING
IN OUR COMMUNITY



OUR LEADERSHIP TEAM

HHS ADMINISTRATION

Provides Leadership and Program Coordination Across All Divisions

Leads Department-wide Initiatives

Personnel Management and Compliance with County policies

Program Integrity and Quality Assurance

Internal Program Monitoring across Divisions

Quality Assurance Reviews of Child Welfare and IHSS Cases

HIPAA Compliance

HHS Compliance with Civil Rights

Equity and Diversity

Program Evaluation and Outcome Development

Public Relations with Internal and External Partners

Divisions and Programs

Behavioral Health

Mental Health Wellness Centers
Progress House Mental Health Services
FIRST (Wrap) Act (MHSA)
Substance Use Disorder (SUD)

Public Health and Prevention

Immunizations, Flu and Vaccine Clinics
Communicable Disease Surveillance
Pregnancy, TB, STD and HIV Testing
Jail Inmate Health and ReEntry Services
First 5 Inyo County and Home Visiting
Maternal, Child and Adolescent Health
Tobacco Education Program
Woman Infant & Children (WIC)
Prevention programs (Child Abuse, SUD,
and Oral Health)

Aging and Social Services

Employment and Eligibility (Public Assistance)
Child Protective Services
Adult Protective Services
In-Home Supportive Services
Senior Centers and Aging Programs

Fiscal Oversight and Special Operations

HHS Fiscal Services (budget oversight,
accounts receivable/payables,
payroll, contract tracking and
audits/monitoring)
Innovations and Grant Management
Disaster Preparedness and Emergency Services
Continuum of Care (CoC)/Housing Services

***Counties have mandates related to Public Health, California Children's Services, Indigent Care, Mental Health Services, Public Assistance, Child Protective Services, Adult Protective Services – some services cannot be contracted out (CPS).**

Key Mandates

Social Services (WIC 202.5, 1596.82, 10531, 10532, 10804, 11331.7, 13004, 16500 and PC 1165.9)

- ❖ Counties shall implement the provisions of the CalWORKs program
- ❖ Each county shall develop a plan to deliver a full range of services to move CalWORKs recipients from welfare to work
- ❖ BOS may contract with any other county/counties or with the (State) for the operation & maintenance of such public social services
- ❖ Counties shall arrange for the provision of education & supportive services that teenage parents need (CalLearn)
- ❖ Counties shall provide protective services for adults
- ❖ Reports of suspected child abuse/neglect shall be made to any police/sheriff's department or the county welfare department
- ❖ The duties with respect to minors alleged or adjudged to be abused and/or neglected shall be deemed to be social service
- ❖ The state, through the county welfare department, shall establish & support a public system of statewide child welfare services

Temporary Assistance to Needy Families (TANF; WIC 10531, 10532)

See above



Key Mandates, cont.

California Children's Services (HSC123850)

Board of Supervisors shall designate the county department of public health or county department of social welfare...to administer the CCS program

California Health and Disability Prevention (HSC 124033)

The governing body of each count shall establish a community CHDP program...may interact with public or private entities

First 5 (HSC) 130100

The programs authorized by this act shall be administered by...and by county children and families' commissions.

Drinking Driver Programs (HSC 11837.3)

Each County...shall determine its ability to establish, through public/private resources, a...DUI program

Foster Care (WIC 11460)

Foster care providers shall be paid...State functions shall be performed by the (State) department or by delegation of the department to county welfare departments...or Indian tribes...

General Relief (WIC 17001)

The Board of Supervisors of each county, or the agency authorized by the county charter, shall adopt standards of aid & care for the indigent & dependent poor of the county.

Health (HSC Sections

101000,120350,123380,102275, 120175, 123740, 121362 & 121365; and WIC 10804.1)

- ❖ Each BOS shall appoint a health officer
- ❖ County health officer shall organize and maintain a program to make immunizations available
- ❖ Local public health agencies shall make pregnancy testing services available
- ❖ Health officer is the local registrar...shall perform all duties of local registrar of births and deaths
- ❖ Each health officer shall take measures to prevent the spread of the disease or occurrence of additional cases
- ❖ Each local health office is directed to use every available means to ascertain the existence of & immediately investigate a reported or suspected case(s) of active tuberculosis

Mental Health (WIC 5602)

BOS of every county...shall establish a community mental health service to cover the entire are of the county...

Tobacco (HSC 104400)

Each county health department shall be the lead local agency for its county...(and) shall have the overall responsibility for the success of the program

FUNDING STREAMS

Types

- State and Federal Allocations/Contracts
- Grants
- Medi-Cal Reimbursement
- Medicare/Private Insurance
- 1991 and 2011 Realignment
- Fees/Rents/Donations
- General Fund

Funding Characteristics

- Categorical Funding
- Restricted Uses
- May be Caseload Driven
- Some Capped Allocations

REALIGNMENT

- Prior to 1991:
 - Counties experience budget issues as a result of Prop 13
 - State assumed greater funding responsibilities and instituted a County maintenance of effort requirement for Health, Mental Health and Social Services programs
 - 1980s Vehicle Licensing Fee reductions to counties
 - 1989 and 1990 budgets reflected significant funding reductions to county programs
- Realignment 1991-92:
 - Governor's January 1991 budget included proposed transfer of county health services, indigent health, community mental health, and local health services to counties
 - Changed the state/county cost-sharing ratios for certain social services and health programs
 - Earmarked ½ cent of a sales tax increase and VLF funding to support the increased financial obligations of counties to provide health, mental health and social services

REALIGNMENT, cont.

- 2011 Realignment:
 - 1991 Realignment was seen as a successful model for addressing state fiscal shortfalls
 - 2011 realignment broadened the scope of state realigned programs, including criminal justice programs
 - Shifts the responsibility and funding for a series of major programs from the state to local level
 - Mental Health services, substance abuse treatment, child welfare programs, adult protective services and Cal WORKs (California Work Opportunity and Responsibility to Kids) were HHS realigned programs
 - Allocates realigned funding to local governments pursuant to a complicated series of accounts and subaccounts
 - Funded with a state sales tax of 1.0625% (this funds the realigned social services and behavioral health programs) and 0.5% VLF.

2022

Year in Review

Major initiatives in the past year

Department Initiatives

Justice, Equity, Diversity, and Inclusion

- Formed a JEDI team in 2020/2021 to help HHS develop our internal and collective understanding of our own implicit biases that may impact our service delivery
- Team meetings with community leaders speaking from their own cultural experiences
- Reviewing of our practices and policies to ensure equity, diversity, inclusion, and access to critical services such as health care

Becoming Trauma Informed

- HHS values the story behind the people we serve, including the trauma that has impacted their lives. We strive to be trauma-informed when providing our services.
- HHS recognizes secondary trauma associated with service provision
- Agency partnered with Probation and community partners in training
- As of December 2022, over 1/2 of HHS staff have been trained

Growing Leaders



- Expand 360 evaluation of leadership beyond Director
- Identified a company to support 360 Evaluations for all supervisors and managers
- Established contract with Qualtrics



Division/Program Initiatives

- ❖ CalAIM (California Advancing and Innovating Medi-Cal)
- ❖ Crisis Care Mobile Unit (CCMU) Planning
- ❖ Mobile Health Clinic Partnership
- ❖ Families Urgent Response System
- ❖ COVID-19 Recovery
- ❖ Electronic Health Record Transition
- ❖ Cal SAWS – transition to statewide system
- ❖ CARES (preparation for new child welfare statewide data system conversion)
- ❖ Continuum of Care (CoC) lead administrative entity



OUR IMPACT

WHAT IMPACT ARE YOUR SERVICES MAKING? (Just a few)

- *Children are safe*
- *Seniors live independently longer with supports offered through IHSS, APS and Senior Center Programming*
- *Individuals and families receive critical safety net support during difficult times, including access to medical care*
- *Adults and children in crisis are provided the support and services to ensure their safety*
- *Adults and youth get clean and sober*
- *Adults and children receive mental health treatment*
- *Inmates receive critical medical and behavioral health care services*
- *Children are immunized and adults and children receive vaccines and other public health services*
- *Children get parents who learn new ways to parent*
- *Adults and children have food security*
- *People stop smoking and develop healthier habits*
- *Individuals and families have housing*
- *Adults find jobs*
- *Residents are sheltered and supported during a disaster*



LOOKING FORWARD

2023

AND BEYOND

Initiatives and Projects Expected

- ❖ Continue HHS-wide and Division/Program Initiatives
- ❖ CARE Court – State’s initiative to address untreated mental illness using a drug-court model
- ❖ Opioid Settlement Program Development
- ❖ Additional CoC planning and housing program development
- ❖ System Improvement Planning for specific programs
- ❖ IHSS Bargaining
- ❖ Senior Services Needs Assessment – Planning for 2030
- ❖ Disaster Readiness
- ❖ Succession Planning



❖ Increased Mandates and Already Stressed Systems

- ❖ CARE Court
- ❖ Crisis Care Mobilization Unit
- ❖ Three On-Call systems (Jail Health, Behavioral Health and Social Services)

❖ Recruitment and Retention

- ❖ Mental Health Professionals
- ❖ Public Health and Registered Nurses
- ❖ Substance Use Disorder Treatment Providers
- ❖ Child Welfare/Adult Services Social Workers
- ❖ General difficulty filling positions-changing workforce expectations

Bridging the Challenges



With Our Strengths

- ❖ Strong, Committed Team
- ❖ Supportive County Administration
- ❖ "Growing our Own" through coaching, training and support
- ❖ Tuition Assistance Program
- ❖ County and Community Partnering

HEALTH AND HUMAN SERVICES

THANK YOU

