

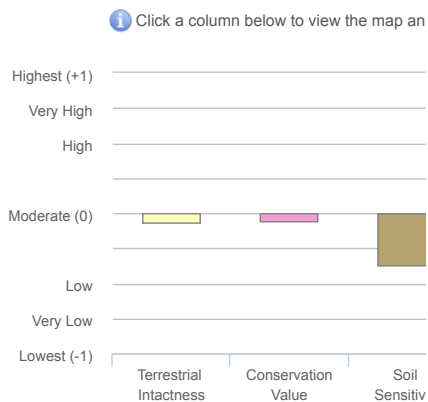


DRECP SITE SURVEY ANALYST

Select a Location

Model Results

Selection Tools



Covered Species

Covered Communities

Click a node in the diagram above to map th

Click an image below to map the modeled distribution

Burrowing owl

Golden eagle

Mohave ground squirrel

Owens Valley checkerbloom

Pallid bat

Townsend's big-eared bat

Willow flycatcher (ssp. Southwestern willow flycatcher)

Yellow-billed cuckoo (ssp. Western yellow-billed cuckoo)

Conservation Management Actions (CMAs)



Species: Burrowing owl (*Athene cunicularia*)

In the Reserve Design

BLM LUPA Lands:

AM-RES-BLM-1: The following CMA will be implemented on BLM LUPA conservation designations for all natural communities and Cov values, goals, objectives, and management actions established in the BLM special land allocation management plans (i.e., NLCS, ACEC and allocation) apply to land with BLM LUPA conservation designations, as described in [Appendix L](#). Natural communities and Covered Species LUPA conservation designations will be managed according to the unit--specific management actions to maintain the vegetation, fish and wil resource values within the NLCS/ACEC/Wildlife Allocation unit as described in the BLM special land allocation management plans ([Appen](#)



Species: Golden eagle (*Aquila chrysaetos*)

In the Reserve Design

BLM LUPA Lands:

AM-RES-BLM-1: The following CMA will be implemented on BLM LUPA conservation designations for all natural communities and Cov values, goals, objectives, and management actions established in the BLM special land allocation management plans (i.e., NLCS, ACEC and allocation) apply to land with BLM LUPA conservation designations, as described in [Appendix L](#). Natural communities and Covered Species LUPA conservation designations will be managed according to the unit--specific management actions to maintain the vegetation, fish and wil resource values within the NLCS/ACEC/Wildlife Allocation unit as described in the BLM special land allocation management plans ([Appen](#)

AM-RES-BLM-ICS-9: The cumulative loss of foraging habitat within a 4 mile radius around active or alternative golden eagle nests (see [A](#) reserve will be limited to less than 10%.



Species: Mohave ground squirrel (*Spermophilus [Xerospermophilus] mohavensis*)

In the Reserve Design

BLM LUPA Lands:

AM-RES-BLM-1: The following CMA will be implemented on BLM LUPA conservation designations for all natural communities and Cov values, goals, objectives, and management actions established in the BLM special land allocation management plans (i.e., NLCS, ACEC and allocation) apply to land with BLM LUPA conservation designations, as described in [Appendix L](#). Natural communities and Covered Species LUPA conservation designations will be managed according to the unit--specific management actions to maintain the vegetation, fish and wil resource values within the NLCS/ACEC/Wildlife Allocation unit as described in the BLM special land allocation management plans ([Appen](#)

AM-RES-BLM-ICS-14: Long-term vegetation removal within Important Areas will be prohibited, unless the land use is compatible with M squirrel protection and management. Compatible land uses are those described in the BLM LUPA for ACECs where Mohave ground squirrel

AM-RES-BLM-ICS-15: Any disturbance within suitable habitat will require the same protocol survey (AM-DFA-ICS-37), clearance survey 36), and construction monitoring (AM-DFA-ICS-41) measures for DFAs.

AM-RES-BLM-ICS-16: BLM will not authorize the use of rodenticides on BLM-administered land in areas where Mohave ground squirrel managed. Use of rodenticide inside of buildings is prohibited.

AM-RES-BLM-ICS-17: On BLM conservation lands, to the maximum extent practicable and/or as allowed under existing permits establish fencing to exclude cattle, horses, sheep, and other potential grazers from areas that are protected and managed for Mohave ground squirrel an stands that are important foraging habitat, including winterfat and spiny hopsage.



Species: Owens Valley checkerbloom (*Sidalcea covillei*)

In the Reserve Design

BLM LUPA Lands:

AM-RES-BLM-1: The following CMA will be implemented on BLM LUPA conservation designations for all natural communities and Cov values, goals, objectives, and management actions established in the BLM special land allocation management plans (i.e., NLCS, ACEC and allocation) apply to land with BLM LUPA conservation designations, as described in [Appendix L](#). Natural communities and Covered Species LUPA conservation designations will be managed according to the unit--specific management actions to maintain the vegetation, fish and wil resource values within the NLCS/ACEC/Wildlife Allocation unit as described in the BLM special land allocation management plans ([Appen](#)

AM-RES-BLM-PLANT-1: For all land allocations, substations will be sited in such a way as to avoid suitable habitat for all plant Covered



Species: Pallid bat (*Antrozous pallidus*)

In the Reserve Design

BLM LUPA Lands:

AM-RES-BLM-1: The following CMA will be implemented on BLM LUPA conservation designations for all natural communities and Cov values, goals, objectives, and management actions established in the BLM special land allocation management plans (i.e., NLCS, ACEC and allocation) apply to land with BLM LUPA conservation designations, as described in [Appendix L](#). Natural communities and Covered Species LUPA conservation designations will be managed according to the unit--specific management actions to maintain the vegetation, fish and wil resource values within the NLCS/ACEC/Wildlife Allocation unit as described in the BLM special land allocation management plans ([Appen](#)



Species: Swainson's hawk (*Buteo swainsoni*)

In the Reserve Design

BLM LUPA Lands:

AM-RES-BLM-1: The following CMA will be implemented on BLM LUPA conservation designations for all natural communities and Cov values, goals, objectives, and management actions established in the BLM special land allocation management plans (i.e., NLCS, ACEC and allocation) apply to land with BLM LUPA conservation designations, as described in [Appendix L](#). Natural communities and Covered Species LUPA conservation designations will be managed according to the unit--specific management actions to maintain the vegetation, fish and wil resource values within the NLCS/ACEC/Wildlife Allocation unit as described in the BLM special land allocation management plans ([Appen](#)



Species: Townsend's big-eared bat (*Corynorhinus townsendii*)

In the Reserve Design

BLM LUPA Lands:

AM-RES-BLM-1: The following CMA will be implemented on BLM LUPA conservation designations for all natural communities and Cov values, goals, objectives, and management actions established in the BLM special land allocation management plans (i.e., NLCS, ACEC and allocation) apply to land with BLM LUPA conservation designations, as described in [Appendix L](#). Natural communities and Covered Species LUPA conservation designations will be managed according to the unit--specific management actions to maintain the vegetation, fish and wil resource values within the NLCS/ACEC/Wildlife Allocation unit as described in the BLM special land allocation management plans ([Appen](#)



Species: Willow flycatcher (ssp. Southwestern willow flycatcher) (*Empidonax traillii extimus*)

In the Reserve Design

BLM LUPA Lands:

AM-RES-BLM-1: The following CMA will be implemented on BLM LUPA conservation designations for all natural communities and Covered Species LUPA conservation designations, as described in [Appendix L](#). Natural communities and Covered Species LUPA conservation designations will be managed according to the unit--specific management actions to maintain the vegetation, fish and wildlife resource values within the NLCS/ACEC/Wildlife Allocation unit as described in the BLM special land allocation management plans ([Appendix L](#)).



Species: Yellow-billed cuckoo (ssp. Western yellow-billed cuckoo) (*Coccyzus americanus occidens*)

In the Reserve Design

BLM LUPA Lands:

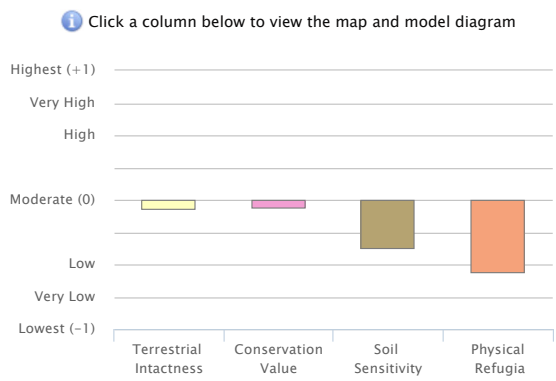
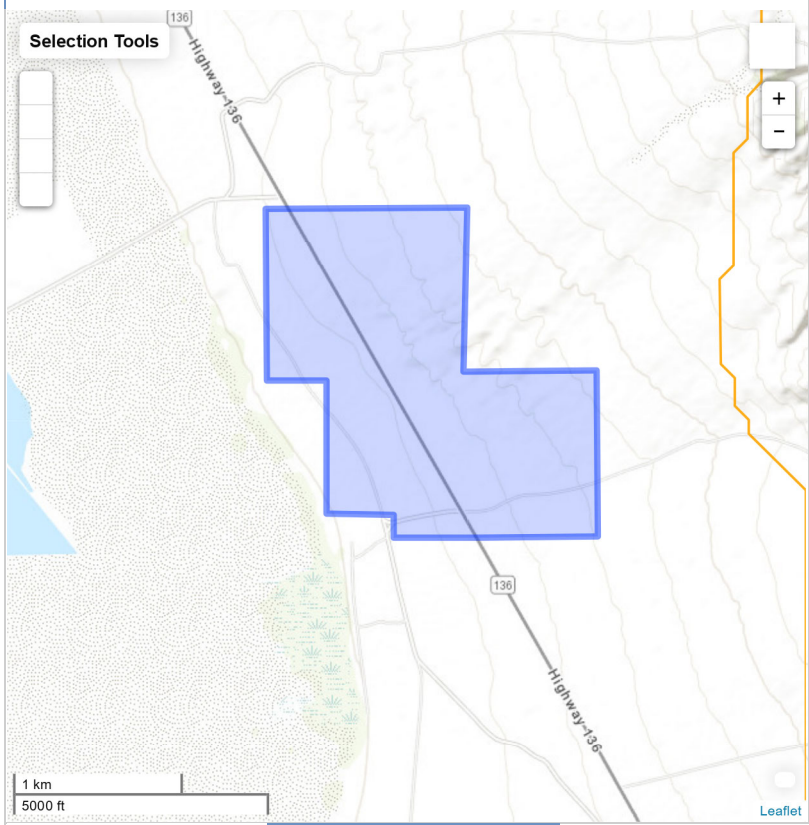
AM-RES-BLM-1: The following CMA will be implemented on BLM LUPA conservation designations for all natural communities and Covered Species LUPA conservation designations, as described in [Appendix L](#). Natural communities and Covered Species LUPA conservation designations will be managed according to the unit--specific management actions to maintain the vegetation, fish and wildlife resource values within the NLCS/ACEC/Wildlife Allocation unit as described in the BLM special land allocation management plans ([Appendix L](#)).



Select a Location

Model Results

Mean



Covered Species

Covered Communities

Click a node in the diagram above to map the model component

Click an image below to map the modeled distribution

Lower Bajada and Fan Mojavean - Sonoran Desert Scrub

Shadscale - Saltbush Cool Semi-desert Scrub

Southwestern North American Salt Basin And High Marsh

Conservation Management Actions (CMAs)



Community: Lower Bajada and Fan Mojavean – Sonoran Desert Scrub

In the Reserve Design

BLM LUPA Lands:

AM-RES-BLM-1: The following CMA will be implemented on BLM LUPA conservation designations for all natural communities and Covered Species: The values, goals, objectives, and management actions established in the BLM special land allocation management plans (i.e., NLCS, ACEC and wildlife allocation) apply to land with BLM LUPA conservation designations, as described in [Appendix L](#). Natural communities and Covered Species within BLM LUPA conservation designations will be managed according to the unit-specific management actions to maintain the vegetation, fish and wildlife, and other resource values within the NLCS/ACEC/Wildlife Allocation unit as described in the BLM special land allocation management plans (see [Appendix L](#)).



Community: Shadscale – Saltbush Cool Semi-desert Scrub

In the Reserve Design

BLM LUPA Lands:

AM-RES-BLM-1: The following CMA will be implemented on BLM LUPA conservation designations for all natural communities and Covered Species: The values, goals, objectives, and management actions established in the BLM special land allocation management plans (i.e., NLCS, ACEC and wildlife allocation) apply to land with BLM LUPA conservation designations, as described in [Appendix L](#). Natural communities and Covered Species within BLM LUPA conservation designations will be managed according to the unit-specific management actions to maintain the vegetation, fish and wildlife, and other resource values within the NLCS/ACEC/Wildlife Allocation unit as described in the BLM special land allocation management plans (see [Appendix L](#)).



Community: Southwestern North American Salt Basin And High Marsh

In the Reserve Design

BLM LUPA Lands:

AM-RES-BLM-1: The following CMA will be implemented on BLM LUPA conservation designations for all natural communities and Covered Species: The values, goals, objectives, and management actions established in the BLM special land allocation management plans (i.e., NLCS, ACEC and wildlife allocation) apply to land with BLM LUPA conservation designations, as described in [Appendix L](#). Natural communities and Covered Species within BLM LUPA conservation designations will be managed according to the unit-specific management actions to maintain the vegetation, fish and wildlife, and other resource values within the NLCS/ACEC/Wildlife Allocation unit as described in the BLM special land allocation management plans (see [Appendix L](#)).