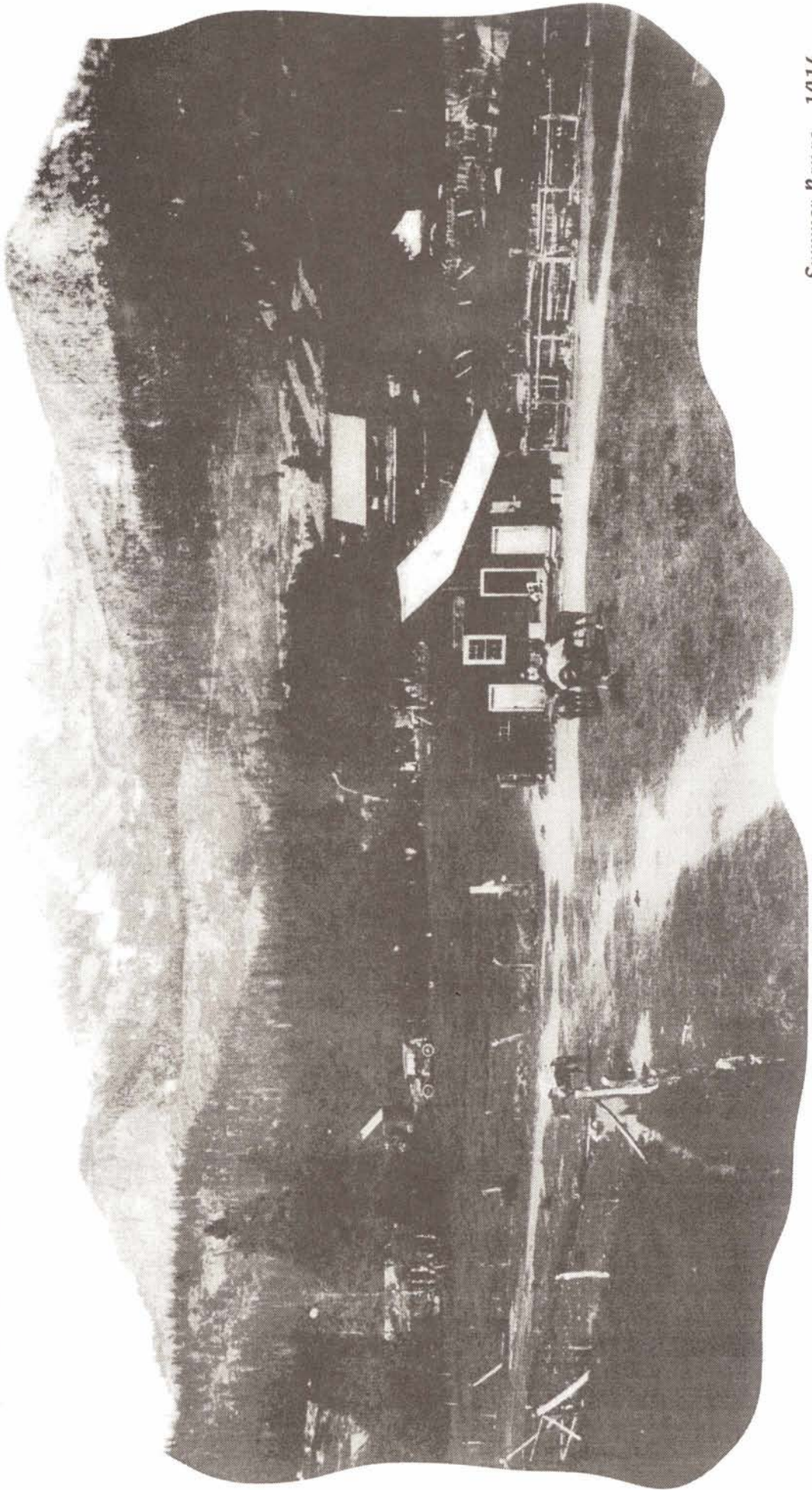


COUNTIES OF INYO AND MONO
AGRICULTURE DEPARTMENT

2001 ANNUAL
CROP AND LIVESTOCK REPORT



*Summer Range - 1914
Mammoth Lakes, California*



Counties of Inyo-Mono



GEORGE L. MILOVICH
AGRICULTURAL COMMISSIONER
DIRECTOR OF WEIGHTS AND MEASURES
207 WEST SOUTH STREET • BISHOP, CALIFORNIA 93514
TELEPHONE: 760.873.7860 • FAX 760.872.1610

inyocoag@telis.org
June 3, 2002

TO: William Lyons, Secretary
California Department of Food and Agriculture

and the Honorable

Inyo County Board of Supervisors

Mono County Board of Supervisors

Linda Arcularius
Julie Bear
Michael Dorame
Carroll Hambleton
Ervin Lent

John Cecil
Tom Farnetti
Byng Hunt
Mary Pipersky
Joann Ronci

It is my pleasure to present the 2001 Agricultural Crop and Livestock Report. This report is a compilation of crop production and estimated values of agricultural commodities grown in Inyo and Mono Counties.

The combined Counties' agricultural production for 2001 totaled \$38,743,688 which represents 8% increase from 2000.

This has been an interesting year for agriculture in California. In many parts of the state severe challenges occurred. However, we, in the Eastern Sierra, were able not only to maintain, but actually increase our values.

Alfalfa went up both in production and value this year, primarily due to good weather, lower acreages being planted with other crops, and the demand for our high elevation/high protein hay.

Beef production was again good and the market value was maintained with beef demand going up in all sectors.

Our row crops kept their share of production in both Counties, with modest decreases in value.

Agriculture continues to be a very vibrant industry that is an integral part of the overall health of Inyo and Mono Counties' economy. Values displayed are only part of the true contribution agriculture has on our relative economic base and spectacular scenery of the Eastern Sierra.

Values represented here are gross agricultural values only and are submitted in accordance with Section 2279 of the California Food and Agriculture Code.

My appreciation goes to the growers and agencies that provide data and to Robin Conklin for her vigilance throughout the process.

Sincerely,

George L. Milovich
Agricultural Commissioner

COUNTY OF INYO

LIVESTOCK

ITEM	YEAR	HEAD	LIVEWEIGHT	UNIT	PRICE PER UNIT	TOTAL
CATTLE & CALVES						
Calves/Steers	2001	5,600	30,800	Cwt.	\$97.00	\$2,988,000
	2000	5,550	29,140	Cwt.	\$98.00	\$2,855,720
Heifers	2001	4,780	22,700	Cwt.	\$92.00	\$2,088,000
	2000	4,750	22,560	Cwt.	\$93.00	\$2,098,080
Cows	2001	2,100	21,000	Cwt.	\$60.00	\$1,260,000
	2000	2,025	20,250	Cwt.	\$65.00	\$1,316,250
Bulls	2001	225	3,038	Cwt.	\$51.00	\$ 154,938
	2000	220	2,970	Cwt.	\$56.00	\$ 166,320
Stockers (gain)	2001	3,500	-	Cwt.	\$85.00	\$ 893,000
	2000	3,000	-	Cwt.	\$88.00	\$ 792,000
SHEEP & LAMBS						
	2001	3,000	2,700	Cwt.	\$70.00	\$ 189,000
	2000	3,000	2,700	Cwt.	\$78.00	\$ 210,600

TOTAL LIVESTOCK	2001	\$7,572,938
	2000	\$7,438,970

LIVESTOCK INVENTORY

FOR PERIOD OF
JANUARY 1, 2001 - JANUARY 1, 2002

Cattle & Calves	14,500
Cows & Heifers that have calved	12,000
Sheep & Lambs	3,000

County of Inyo (continued)

FIELD CROPS

ITEM	YEAR	HARVESTED ACREAGE	YIELD PER ACRE	TOTAL YIELD	UNIT	PRICE PER UNIT	TOTAL
Alfalfa	2001	3,600	6.00	21,600	Ton	\$100.00	\$2,160,000
Hay	2000	3,500	5.50	19,250	Ton	\$ 98.00	\$1,886,500
Miscellaneous	2001	1,000	3.00	3,000	Ton	\$ 95.00	\$ 285,000
Hay	2000	1,000	3.00	3,000	Ton	\$ 90.00	\$ 270,000
Irrigated	2001	16,500	-	-	Acre	\$ 25.00	\$ 412,500
Pasture	2000	16,500	-	-	Acre	\$ 23.00	\$ 379,500
Dry Grazing	2001	230,000	-	-	Acre	\$ 2.00	\$ 460,000
	2000	230,000	-	-	Acre	\$ 1.50	\$ 345,000
						2001	\$3,317,500
TOTAL FIELD CROPS						2000	\$2,881,000

MISCELLANEOUS CROP PRODUCTION

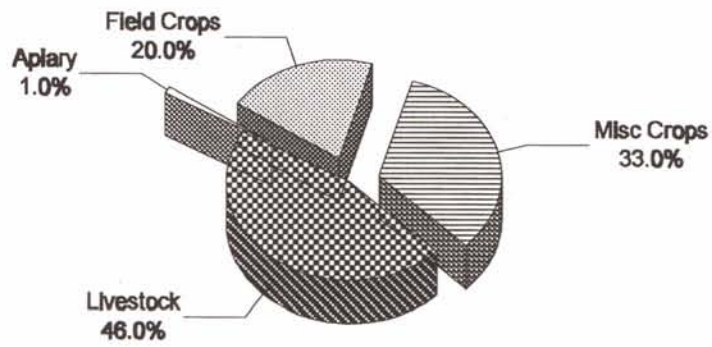
ITEM	YEAR	ACREAGE	TOTAL YIELD	TOTAL	
Garlic	2001	50	-	\$ 126,000	
	2000	50	-	\$ 126,000	
Carrots	2001	270	-	\$1,134,000	
	2000	80	-	\$ 276,000	
Turf	2001	400	-	\$4,000,000	
	2000	350	-	\$3,500,000	
Miscellaneous	2001	19	21,000	\$ 63,000	
Fruit	2000	15	20,000	\$ 55,000	
Miscellaneous	2001	10	-	\$ 45,000	
Vegetables	2000	15	-	\$ 50,000	
Miscellaneous	2001	5	-	\$ 20,000	
Nursery	2000	5	-	\$ 15,000	
				2001	\$5,388,000
TOTAL MISCELLANEOUS CROP PRODUCTION				2000	\$4,022,000

APIARY

ITEM	YEAR	PRODUCTION	UNIT	PRICE PER UNIT	TOTAL
Honey	2001	185,000	Lbs.	\$.60	\$ 111,000
	2000	200,000	Lbs.	\$.70	\$ 140,000
				2001	\$111,000
TOTAL APIARY				2000	\$140,000

COUNTY OF INYO

2001 AGRICULTURAL VALUES





INYO COUNTY TOTALS

	<u>2000</u>	<u>2001</u>
Livestock	\$ 7,438,970	\$ 7,572,938
Field Crops	2,881,000	3,317,500
Miscellaneous Crop Production	4,022,000	5,388,000
Apiary	140,000	111,000
	=====	=====
TOTALS	\$14,481,970	\$16,389,438



COUNTY OF MONO

LIVESTOCK

ITEM	YEAR	NUMBER HEAD	LIVEWEIGHT	UNIT	PRICE PER UNIT	TOTAL
CATTLE & CALVES						
Calves/Steers	2001	6,500	35,750	Cwt.	\$97.00	\$3,467,750
	2000	6,000	31,500	Cwt.	\$98.00	\$3,087,000
Heifers	2001	5,300	25,175	Cwt.	\$92.00	\$2,316,000
	2000	5,000	23,750	Cwt.	\$93.00	\$2,208,750
Cows	2001	2,200	22,000	Cwt.	\$60.00	\$1,320,000
	2000	2,000	20,000	Cwt.	\$68.00	\$1,360,000
Bulls	2001	225	3,000	Cwt.	\$51.00	\$ 155,000
	2000	200	2,700	Cwt.	\$56.00	\$ 151,200
Stockers (gain)	2001	9,000	-	Cwt.	\$85.00	\$2,295,000
	2000	7,500	-	Cwt.	\$88.00	\$1,980,000
SHEEP & LAMBS	2001	16,000	14,400	Cwt.	\$70.00	\$1,008,000
	2000	17,000	15,300	Cwt.	\$78.00	\$1,193,400
TOTAL LIVESTOCK				2001	\$10,561,750	
				2000	\$ 9,980,350	

LIVESTOCK PRODUCTS

ITEM	YEAR	PRODUCTION	UNIT	PRICE PER UNIT	TOTAL
Wool	2001	1,200	Cwt.	\$ 65.00	\$ 78,000
	2000	1,400	Cwt.	\$ 55.00	\$ 77,000
TOTAL LIVESTOCK PRODUCTS				2001	\$ 78,000
				2000	\$ 77,000

LIVESTOCK INVENTORY

FOR PERIOD OF
January 1, 2001 - January 1, 2002

Cattle & Calves	14,900
Cows & Heifers that have calved	13,000
Sheep & Lambs	5,000

FIELD CROPS

ITEM	YEAR	HARVESTED ACREAGE	YIELD PER ACRE	TOTAL YIELD	UNIT	PRICE PER UNIT	TOTAL
Alfalfa	2001	8,200	6.00	49,200	Ton	\$100.00	\$4,920,000
Hay	2000	8,000	5.50	44,000	Ton	\$ 98.00	\$4,312,000
Miscellaneous	2001	1,700	3.50	5,950	Ton	\$ 95.00	\$ 565,000
Hay	2000	1,500	3.00	4,500	Ton	\$ 90.00	\$ 405,000
Irrigated	2001	54,000	-	-	Acre	\$ 25.00	\$1,350,000
Pasture	2000	54,000	-	-	Acre	\$ 23.00	\$1,242,000
Dry Grazing	2001	83,000	-	-	Acre	\$ 2.00	\$ 166,000
	2000	83,000	-	-	Acre	\$ 1.50	\$ 124,500
						2001	\$7,001,000
TOTAL FIELD CROPS							
						2000	\$6,083,500

ROW CROP PRODUCTION

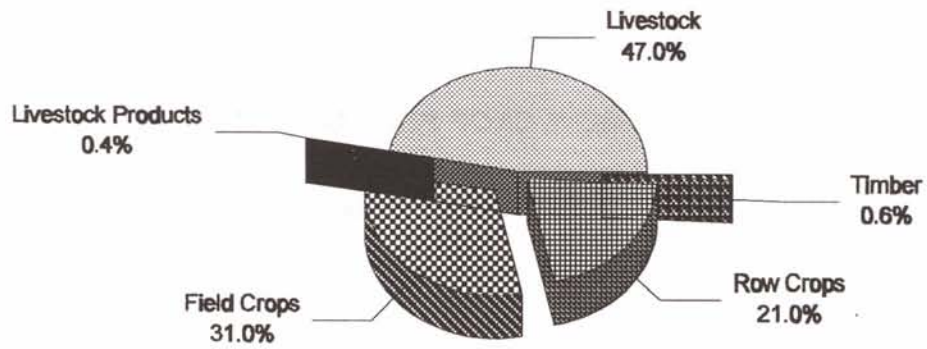
ITEM	YEAR	ACREAGE	TOTAL	
Garlic	2001	215	\$ 617,000	
	2000	265	\$ 667,800	
Carrots	2001	900	\$3,969,000	
	2000	1,170	\$4,301,000	
			2001	4,585,000
TOTAL ROW CROP PRODUCTION				
			2000	\$4,968,800

TIMBER

ITEM	YEAR	TOTAL	
Timber/Firewood	2001	\$ 128,500	
	2000	\$ 52,400	
		2001	\$ 128,500
TOTAL TIMBER			
		2000	\$ 52,400

COUNTY OF MONO

2001 AGRICULTURAL VALUES

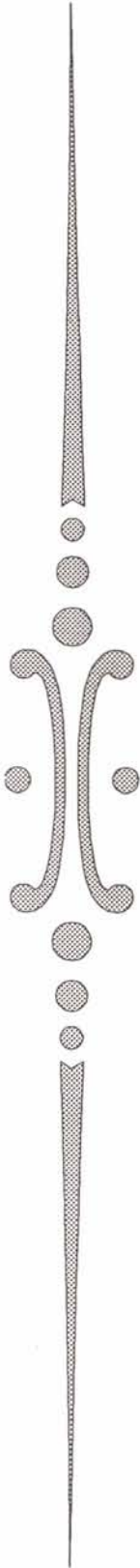




MONO COUNTY TOTALS

	2000 =====	2001 =====
Livestock	\$ 9,980,350	\$10,561,750
Livestock Products	77,000	78,000
Field Crops	6,083,500	7,001,000
Row Crop Production	4,968,800	4,585,000
Timber	52,400	128,500
	=====	=====
TOTALS	\$21,162,050	\$22,354,250





COMPARISON SUMMARY

1997-2001

	1997 =====	1998 =====	1999 =====	2000 =====	2001 =====
INYO COUNTY TOTALS	\$12,299,730	\$12,017,301	\$13,160,350	\$14,481,970	\$16,389,438
MONO COUNTY TOTALS	\$18,425,892	\$19,880,020	\$19,333,650	\$21,162,050	\$22,354,250
COMBINED TOTALS	\$30,725,622	\$31,897,321	\$32,494,000	\$35,644,020	\$38,743,688



ANNUAL SUSTAINABLE AGRICULTURE REPORTING



PEST ERADICATION

PEST	AGENT/MECHANISM	SCOPE OF PROGRAM
Puncture Vine	Biological control (Stem and Seed Weevils)	25 sites
Dalmatian Toadflax	Mechanical (hand pulling)	3 sites
Yellow Star Thistle	Mechanical (hand pulling)	2 sites
Perennial Pepperweed	Mechanical (hand pulling)	5 sites
Camelthorn	Mechanical (hand pulling)	1 site
Diffuse Knapweed	Mechanical (hand pulling)	1 site



PEST EXCLUSION

IMPORTED PLANT MATERIAL

Exotic and/or target pests	Incoming plant material via UPS, air, truck, mail	3,208 shipments inspected
----------------------------	---	---------------------------



ORGANIC FARMING STATISTICS

Two organic farm registered in 2001



EASTERN SIERRA CERTIFIED FARMERS MARKET

23 growers participated in the 2001 Farmers Market. Commodities sold included melons, tree fruit, row crops, herbs and honey.



EASTERN SIERRA WEED MANAGEMENT AREA, a joint powers group, established July 7, 1998

Saltcedar - biological control (Tamarisk Leaf Eating beetle)	3 sites
Perennial pepperweed - Mechanical & Herbicide	59 sites
Public Education	4 sites

2,348 acres were treated for Perennial pepperweed, Canada thistle, Scotch thistle, Russian knapweed, and Halogeton.

