

### DRAWING LEGEND

DESCRIPTION	EXISTING	FUTURE
ACCESS ROAD (G = GATE)	G	FG
AIRPORT LEASE BOUNDARY	N/A	N/A
AIRPORT LICENSE BOUNDARY	N/A	N/A
AIRPORT USE EASEMENT BOUNDARY	N/A	N/A
AIRFIELD PAVEMENT	N/A	N/A
AIRFIELD PAVEMENT SHOULDER	N/A	N/A
AIRPORT REFERENCE POINT (ARP)	N/A	N/A
AIRCRAFT TIEDOWNS (PARKING)	N/A	N/A
BUILDINGS	N/A	N/A
BUILDING RESTRICTION LINE (BRL)	N/A	N/A
FACILITIES TO BE REMOVED	N/A	X
FENCE (EXISTING: TYP. 4')	N/A	N/A
GROUND CONTOURS (5' INTERVAL)	N/A	N/A
RUNWAY LIGHTS	N/A	N/A
PRECISION APPROACH PATH INDICATORS (PAPI)	N/A	N/A
RUNWAY END IDENTIFIER LIGHTS (REIL)	N/A	N/A
WINDCONE	N/A	N/A
RUNWAY OBJECT FREE AREA (ROFA)	N/A	N/A
RUNWAY OBSTACLE FREE ZONE (OFZ)	N/A	N/A
RUNWAY SAFETY AREA (RSA)	N/A	N/A
RUNWAY PROTECTION ZONE (RPZ) APPROACH	N/A	N/A
RUNWAY VISIBILITY ZONE (RVZ)	N/A	N/A
TAXIWAY OBJECT FREE AREA (TOFA)	N/A	N/A
TAXIWAY SAFETY AREA (TSA)	N/A	N/A
THRESHOLD SITING SURFACE	N/A	N/A
FEMA FLOOD PLAIN - ZONE A	N/A	N/A
SURVEY MONUMENT (PACS/SACS)	N/A	N/A
SECTION CORNER	N/A	N/A

### FACILITY LEGEND

#	DESCRIPTION	E	F	ELEV.
1	TOWER REPLICA BUILDING	●	●	4153.9'
2	SEGMENTED CIRCLE / WIND CONE	●	●	4132.7'
3	ASOS	●	●	4136.9'
4	LOCALIZER	●	●	4119.6'
5	VOR/DME	●	●	4144.6'
6	ADMINISTRATION BUILDING	●	●	4133.9'
7	AIRCRAFT MAINTENANCE BUILDING	●	●	4138.9'
8	LARGE AIRCRAFT APRON	●	●	----
9	TRANSIENT APRON	●	●	----
10	AUTO PARKING	●	●	----
11	ADS-B FACILITY	●	●	----
12	ROTATING BEACON / VAULT	●	●	4139.7'
13	HELIPADS	●	●	----
14	COUNTY FUEL FARM	●	●	4125.4'
15	ARFF/AIRPORT MAINTENANCE BLDG	●	●	4142.3'
16	SIERRA AVIATION/SIERRA LIFE FLIGHT	●	●	4155.9'
17	MULTI-PURPOSE TERMINAL	●	●	----
18	GENERAL AVIATION HANGARS	●	●	----
19	CARGO BUILDING/APRON	●	●	----
20	CENTRAL AIRLINE APRON	●	●	----
21	CENTRAL TERMINAL / TSA	●	●	----
22	ARFF/SNOW BUILDING	●	●	----
23	AUTO PARKING	●	●	----
24	EASTERN SIERRA TRANSIT BLDG.	●	●	----
25	FUEL FARM	●	●	----
26	LONG RANGE TERMINAL/APRON	●	●	----

SEE SHEET 4 FOR FACILITY PENETRATIONS

### ABBREVIATIONS

ADMIN	ADMINISTRATION	NP	NON-PRECISION RUNWAY
ADS-B	AUTOMATIC DEPENDENT SURVEILLANCE-BROADCAST	OCS	OBSTACLE CLEARANCE SURFACE
ALP	AIRPORT LAYOUT PLAN	OFZ	OBSTACLE FREE ZONE
ARC	AIRPORT REFERENCE CODE	PACS/SACS	PRIMARY / SECONDARY AIRPORT CONTROL STATION
ARP	AIRPORT REFERENCE POINT	PIR	PRECISION INSTRUMENT RUNWAY
ASDA	ACCELERATE-STOP DISTANCE AVAILABLE	RDC	RUNWAY DESIGN CODE
ASOS	AUTOMATIC SURFACE OBSERVING SYSTEM	ROFA	RUNWAY OBJECT FREE AREA
BRL	BUILDING RESTRICTION LINE	RPZ	RUNWAY PROTECTION ZONE
DME	DISTANCE MEASURING EQUIPMENT	RSA	RUNWAY SAFETY AREA
E	EXISTING OR EAST	RW	RUNWAY
F	FUTURE	S	SOUTH
GPS	GLOBAL POSITIONING SYSTEM	TDG	TAXIWAY DESIGN GROUP
LDA	LANDING DISTANCE AVAILABLE	TEMP	TEMPERATURE
MAX	MAXIMUM	TESM	TAXIWAY EDGE SAFETY MARGIN
MGW	MAIN GEAR WIDTH	TODA	TAKEOFF DISTANCE AVAILABLE
MIRL	MEDIUM INTENSITY RUNWAY LIGHTS	TOFA	TAXIWAY OBJECT FREE AREA
MITL	MEDIUM INTENSITY TAXIWAY LIGHTS	TORA	TAKEOFF RUNWAY AVAILABLE
MPH	MILES PER HOUR	TSA	TAXIWAY SAFETY AREA
N	NORTH	TSS	THRESHOLD SITING SURFACE
NA	NOT APPLICABLE	TW	TAXIWAY
NAD83	NORTH AMERICAN DATUM OF 1983	VIS	VISUAL RUNWAY
NAVAID	NAVIGATIONAL AID	VOR	VHF OMNIDIRECTIONAL RANGE
NAVD88	NORTH AMERICAN DATUM OF 1988	W	WEST

- ### ALP NOTES
- SEE THE "AIRPORT DATA SHEET" # 2 FOR AIRPORT AND RUNWAY DATA, WIND DATA, AND CURRENT AND FUTURE MODIFICATIONS TO STANDARDS.
  - SEE THE "OUTER APPROACH DRAWING R/W 12" SHEETS 5 & 6 AND "INNER APPROACH" SHEET 7 & 9 FOR REPRESENTATIVE PENETRATIONS TO FAR PART 77 AND APPROACH SURFACES.
  - OBSTRUCTION MAPPING SOURCE IS THE BISHOP NOAA CHART #5737 PUBLISHED JUNE 2006. THERE MAY BE ADDITIONAL TREE PENETRATIONS. NO KNOWN AGIS SURVEY HAS BEEN PERFORMED.
  - AIRFIELD TOPOGRAPHY SOURCE IS QUANTUM SPATIAL DATED FEBRUARY 2014.
  - ALL COORDINATES ARE BASED ON NAD83 AND NAVD88.
  - PORTIONS OF RUNWAY ENDS AND RUNWAY SAFETY AREA FOR 12, 17, 26, 30 & 35 ARE LOCATED WITHIN FEDERAL EMERGENCY MANAGEMENT AGENCY FLOOD PLANE ZONE A, WITH NO BASE FLOOD ELEVATIONS DETERMINED. THESE FLOOD PLAINS ARE SHOWN ON FIRM MAP NUMBERS 06027C0094D, 06027C0125D & 06027C0375D WITH AN EFFECTIVE DATE OF AUGUST 16, 2011.
  - ALL AIRFIELD PAVEMENTS ARE ASPHALTIC CONCRETE.
  - RUNWAYS 8-26, 12-30 & 17-35 HAVE A CURRENT OPERATIONAL USE OF 100 FEET. RUNWAY 8-26 WAS PERMANENTLY NARROWED TO 100 FEET WIDE IN 2016. RUNWAYS 12-30 & 17-30 WIDTH WILL BE RESTORED TO THEIR CURRENT PHYSICAL 150 FOOT WIDTH IN FUTURE CONSTRUCTION PROJECTS. RUNWAY 8-26 TO BE CLOSED TO ACHIEVE RUNWAY VISIBILITY ZONE REQUIREMENTS, AND CONVERTED TO AIRCRAFT AND HELICOPTER PARKING.
  - RUNWAYS 12-30 & 17-35 EDGE LIGHTING WAS RECONSTRUCTED IN 2016 FOR BOTH 100 & 150 FOOT WIDTHS. CURRENT BULB PLACEMENT FOR BOTH RUNWAYS IS AT 100 FOOT WIDTH.
  - A PORTION OF TAXIWAY "F" THAT INTERSECTS WITH RUNWAYS 8-26 & 17-35 SHALL BE REMOVED.
  - SITING OF NAVAIDS AND LIGHTING IS SUBJECT TO FAA REVIEW AND DESIGN.
  - AS USED IN THIS DOCUMENT, "LEASE" IS DEFINED AS "A CONVEYANCE OF LANDS OR TENEMENTS FOR A TERM OF YEARS, AT WILL, IN CONSIDERATION OF A RETURN OF SOME RECOMPENSE". "AMENDMENT" IS DEFINED AS "ANY WRITING MADE OR PROPOSED AS AN IMPROVEMENT OF SOME PRINCIPAL WRITING."

### FAA APPROVAL STAMP

The preparation of this document was financed, in part, through the Airport Improvement Program financial assistance from the Federal Aviation Administration as provided under Title 49 U.S.C., Section 47104. The contents do not necessarily reflect the official views or policy of the F.A.A. Acceptance of this report by the F.A.A. does not in any way constitute a commitment on the part of the United States to participate in any development depicted herein nor does it indicate that the proposed development is environmentally acceptable in accordance with appropriate public laws.

### COUNTY OF INYO APPROVAL

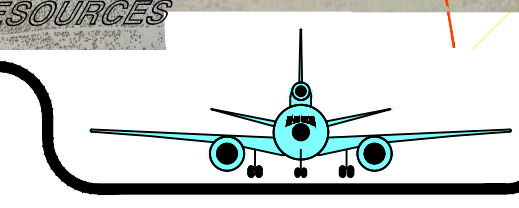
APPROVED: \_\_\_\_\_ DATE \_\_\_\_\_

MICHAEL ERRANTE, P.E.  
DIRECTOR OF PUBLIC WORKS

IF SHEET IS LESS THAN 24" X 36" IT IS A REDUCED PRINT - SCALE REDUCED ACCORDINGLY

<b>9-1-2020</b>		<b>BISHOP AIRPORT</b> A COUNTY OF INYO AVIATION FACILITY CALIFORNIA		DRAWING <b>1</b> OF <b>12</b>	
<b>AIRPORT LAYOUT PLAN</b>		SCALE AS SHOWN		DATE APR 2020	
NO.	DATE	BY	REVISIONS	JOB NUMBER	DRAWING NUMBER
3		G ARH	RSA REVISION, PERIMETER FENCE	1452	1452-1
2	10/10/19	BLK	PREVIOUSLY APPROVED ALP		
1	9/19/02	FAA	PREVIOUSLY APPROVED ALP		
DRAWN	BKL	CHECKED	RPW	DESIGNED	BKL

\* This drawing and the design it covers are the property of Wadell Engineering Corporation. They are merely loaned and on the borrower's express agreement that they will not be reproduced, copied, loaned, exhibited, nor used except in the limited way and private use permitted by any written consent given by the lender to the borrower.



AIP NO. 3-08-0024-15-2013

\* This drawing and the design it covers are the property of Wadell Engineering Corporation. They are hereby loaned and on the borrower's express agreement that they will not be reproduced, copied, loaned, exhibited, nor used except in the limited way and for the purpose intended by the borrower.

TAXIWAY DATA TABLE with columns for ITEM, UNITS, TAXIWAY A through L, and sub-columns for EXISTING and FUTURE conditions.

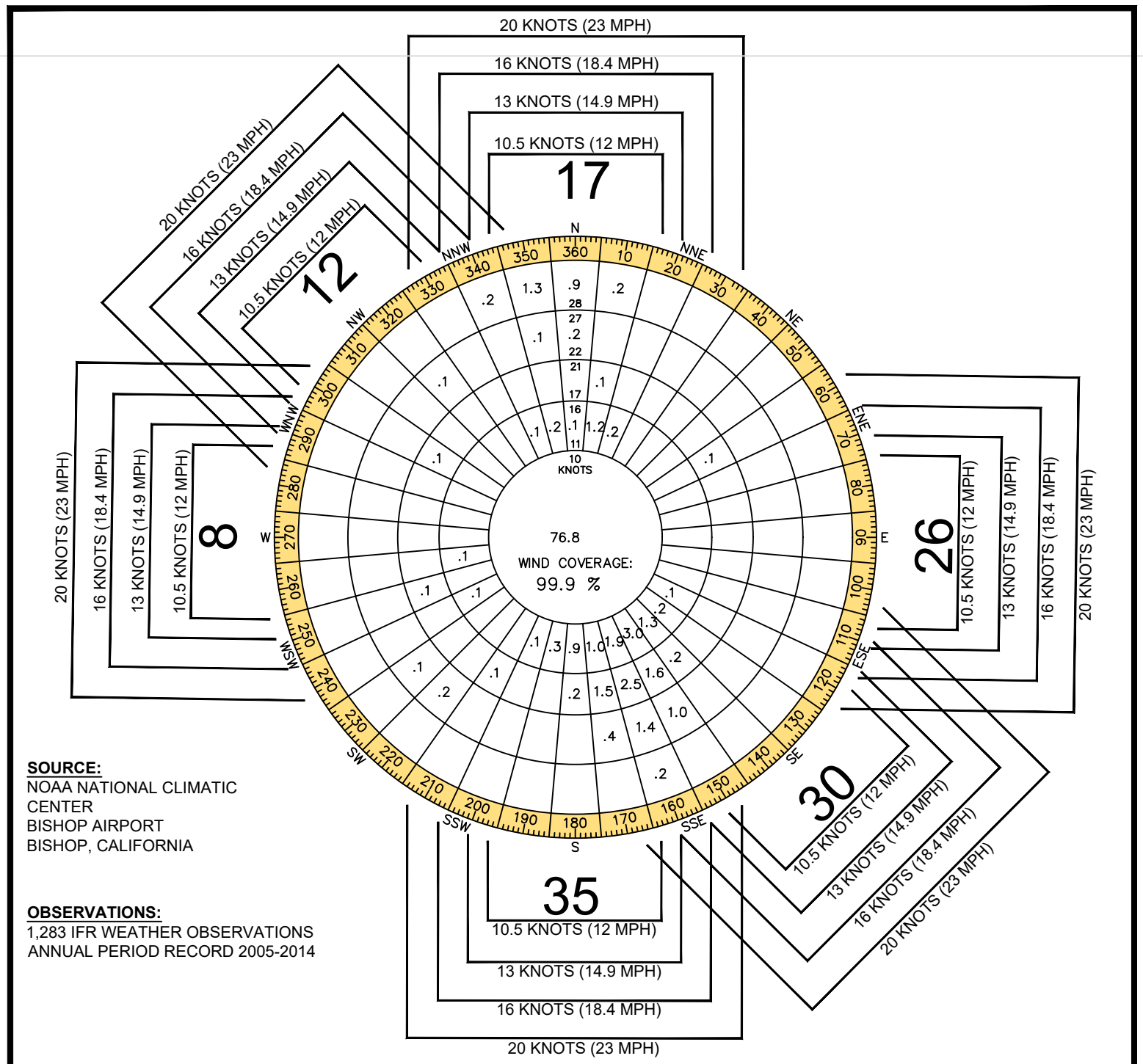
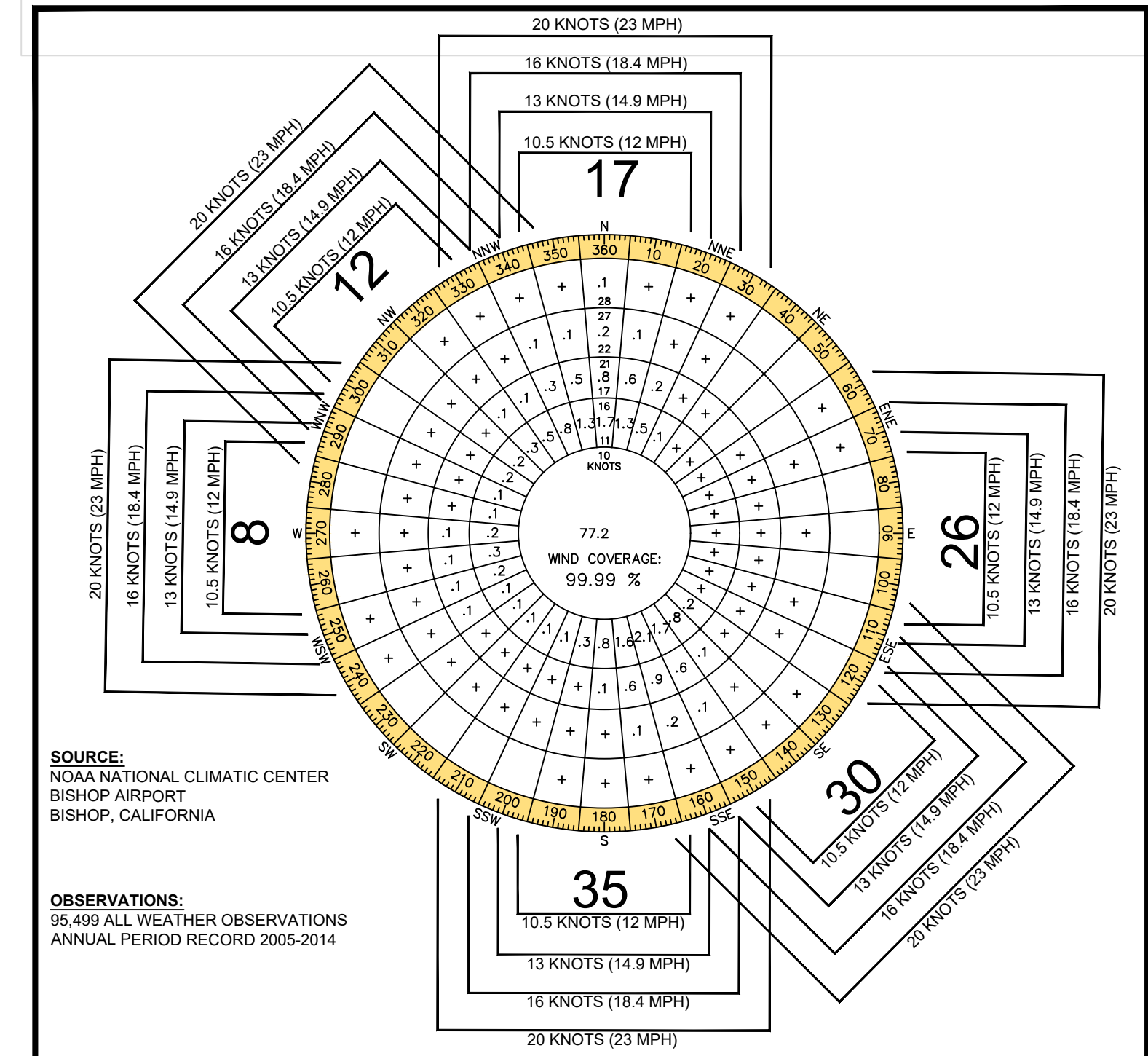
DECLARED DISTANCES table with columns for RUNWAY 12 and RUNWAY 30, and sub-columns for LENGTH, TODA, TORA, ASDA, and LDA.

AIRPORT DATA table with columns for ITEM, EXISTING (E), and FUTURE (F), containing details like AIRPORT REFERENCE CODE, ELEVATION, and COORDINATES.

RUNWAY END COORDINATES (NAD83 & NAVD88) table with columns for RUNWAY END, LATITUDE, LONGITUDE, and ELEVATIONS.

EXISTING NON-STANDARD CONDITIONS table with columns for ITEM, DESIGN STANDARD, STANDARD, NON-STANDARD CONDITIONS, PROPOSED ACTION, and STATUS.

RUNWAY DATA TABLE with columns for CODE / CATEGORY, AIRCRAFT, WIND, AIDS / LIGHTING, PAVEMENT, GRADIENT / ELEVATION, OBJECT PROTECTION, and SEPARATION, detailing runway specifications.

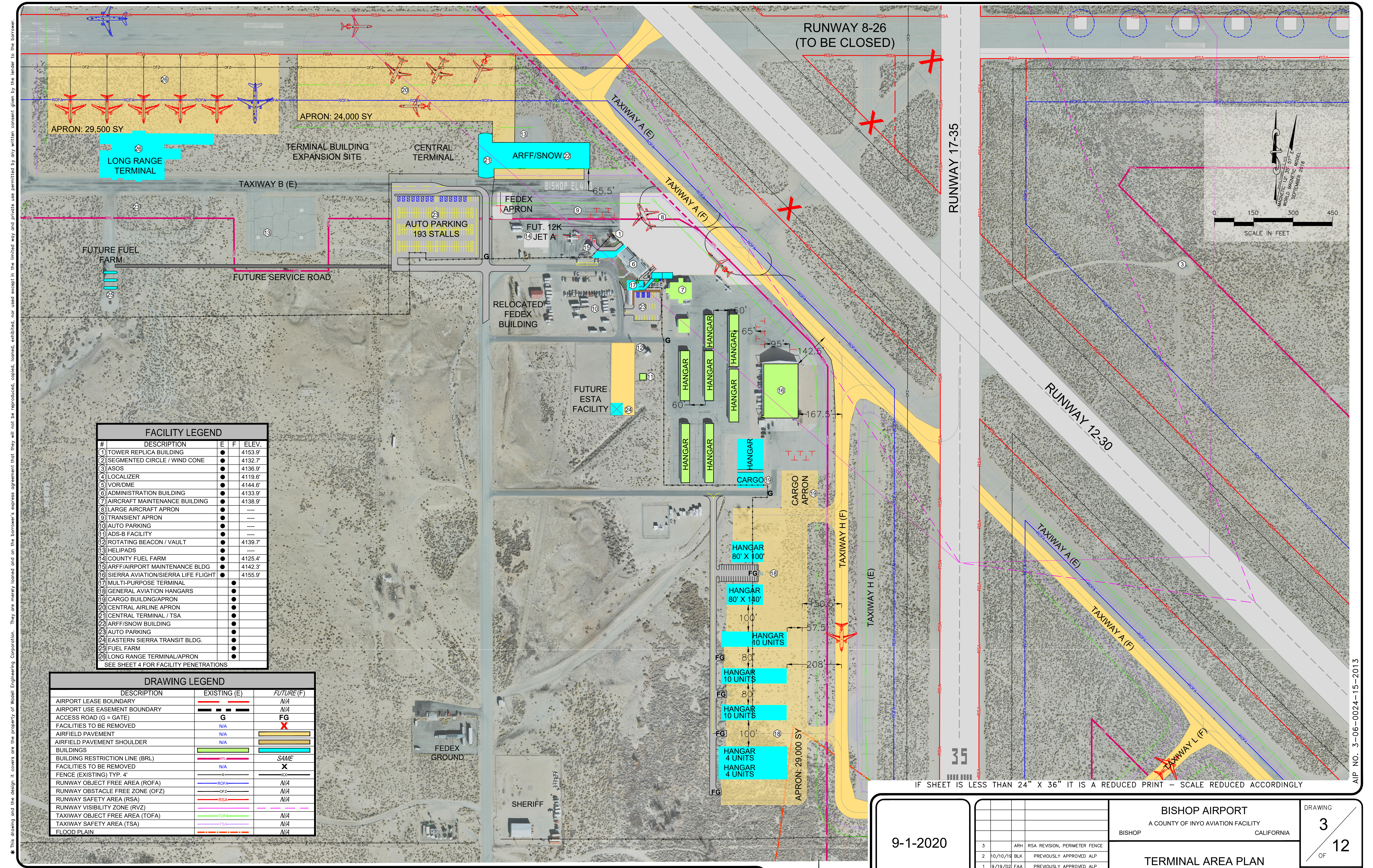


ALL WEATHER WIND COVERAGE table showing wind speed ranges and coverage percentages for various runway configurations.

IFR WEATHER WIND COVERAGE table showing wind speed ranges and coverage percentages for instrument flight rules.

Project summary and metadata including date (9-1-2020), drawing number (2 OF 12), and revision table.

AIP NO. 3-05-0024-15-2013



FACILITY LEGEND			
#	DESCRIPTION	E	F ELEV.
1	TOWER REPLICA BUILDING	●	4153.9'
2	SEGMENTED CIRCLE / WIND CONE	●	4132.7'
3	ASOS	●	4136.9'
4	LOCALIZER	●	4119.6'
5	VOR/DME	●	4144.6'
6	ADMINISTRATION BUILDING	●	4133.9'
7	AIRCRAFT MAINTENANCE BUILDING	●	4138.9'
8	LARGE AIRCRAFT APRON	●	----
9	TRANSIENT APRON	●	----
10	AUTO PARKING	●	----
11	ADS-B FACILITY	●	----
12	ROTATING BEACON / VAULT	●	4139.7'
13	HELIPADS	●	----
14	COUNTY FUEL FARM	●	4125.4'
15	ARFF/AIRPORT MAINTENANCE BLDG	●	4142.3'
16	SIERRA AVIATION/SIERRA LIFE FLIGHT	●	4155.9'
17	MULTI-PURPOSE TERMINAL	●	----
18	GENERAL AVIATION HANGARS	●	----
19	CARGO BUILDING/APRON	●	----
20	CENTRAL AIRLINE APRON	●	----
21	CENTRAL TERMINAL / TSA	●	----
22	ARFF/SNOW BUILDING	●	----
23	AUTO PARKING	●	----
24	EASTERN SIERRA TRANSIT BLDG.	●	----
25	FUEL FARM	●	----
26	LONG RANGE TERMINAL/APRON	●	----
SEE SHEET 4 FOR FACILITY PENETRATIONS			

DRAWING LEGEND		
DESCRIPTION	EXISTING (E)	FUTURE (F)
AIRPORT LEASE BOUNDARY	---	N/A
AIRPORT USE EASEMENT BOUNDARY	---	N/A
ACCESS ROAD (G = GATE)	G	FG
FACILITIES TO BE REMOVED	N/A	X
AIRFIELD PAVEMENT	N/A	X
AIRFIELD PAVEMENT SHOULDER	N/A	X
BUILDINGS	N/A	X
BUILDING RESTRICTION LINE (BRL)	---	SAME
FACILITIES TO BE REMOVED	N/A	X
FENCE (EXISTING) TYP. 4"	X	XX
RUNWAY OBJECT FREE AREA (ROFA)	---	N/A
RUNWAY OBSTACLE FREE ZONE (OFZ)	---	N/A
RUNWAY SAFETY AREA (RSA)	---	N/A
RUNWAY VISIBILITY ZONE (RVZ)	---	N/A
TAXIWAY OBJECT FREE AREA (TOFA)	---	N/A
TAXIWAY SAFETY AREA (TSA)	---	N/A
FLOOD PLAIN	---	N/A

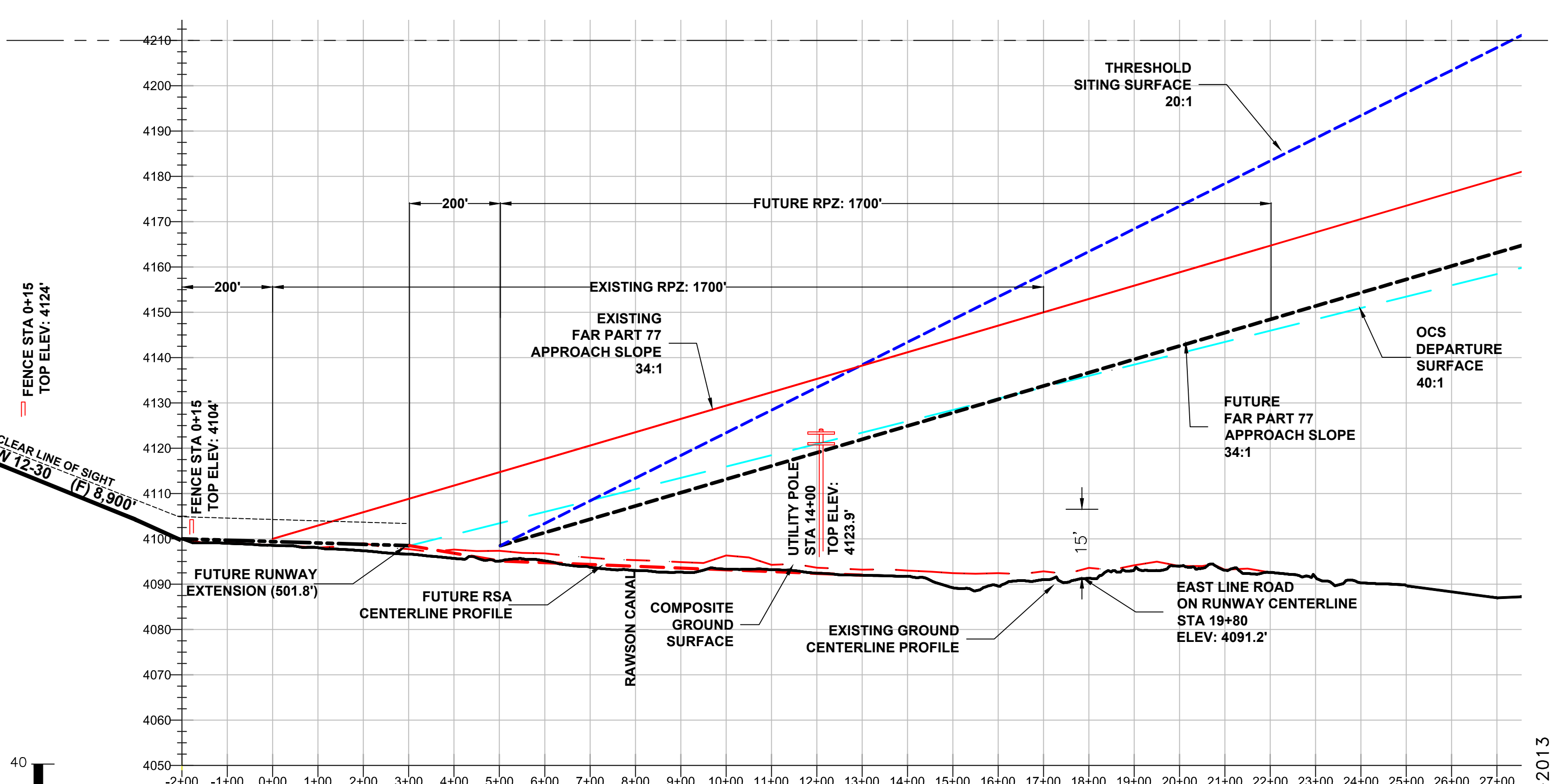
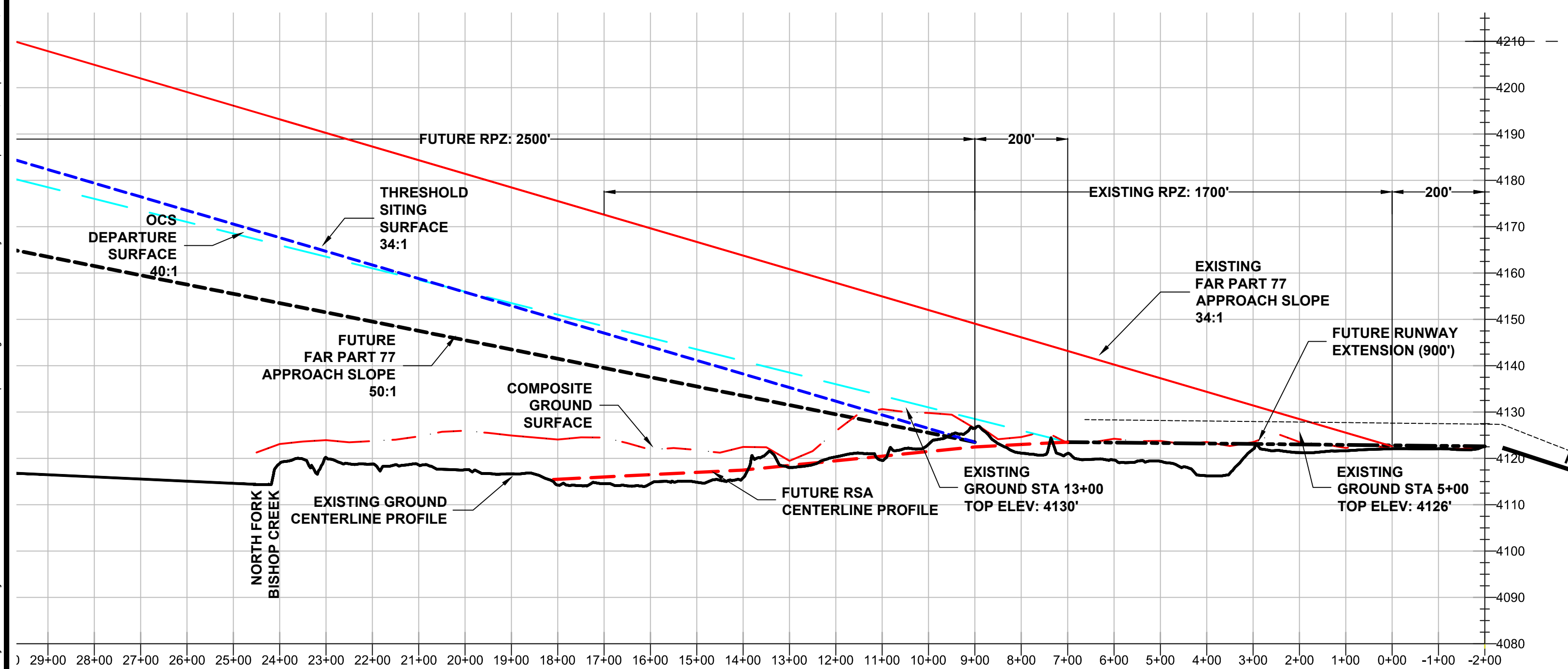
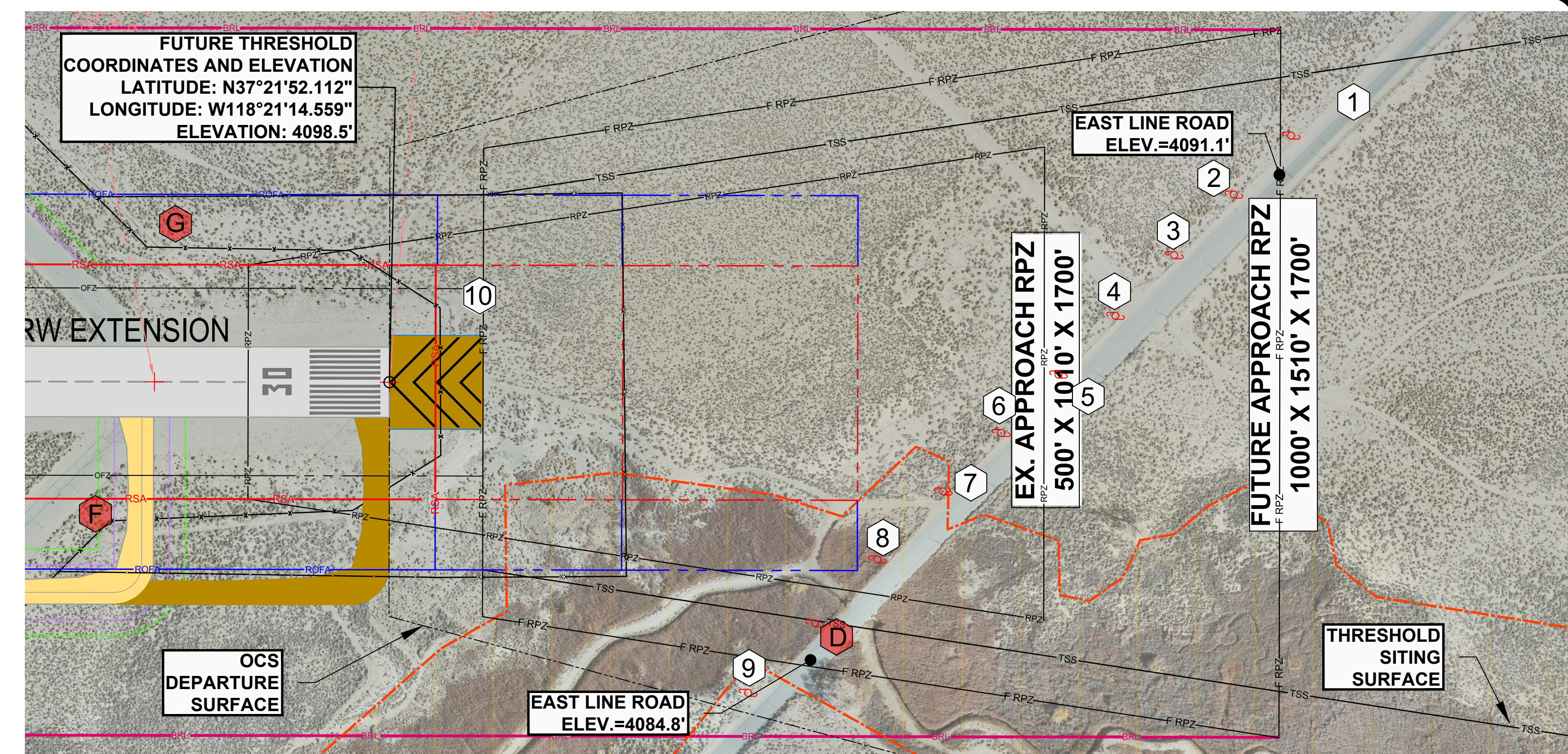
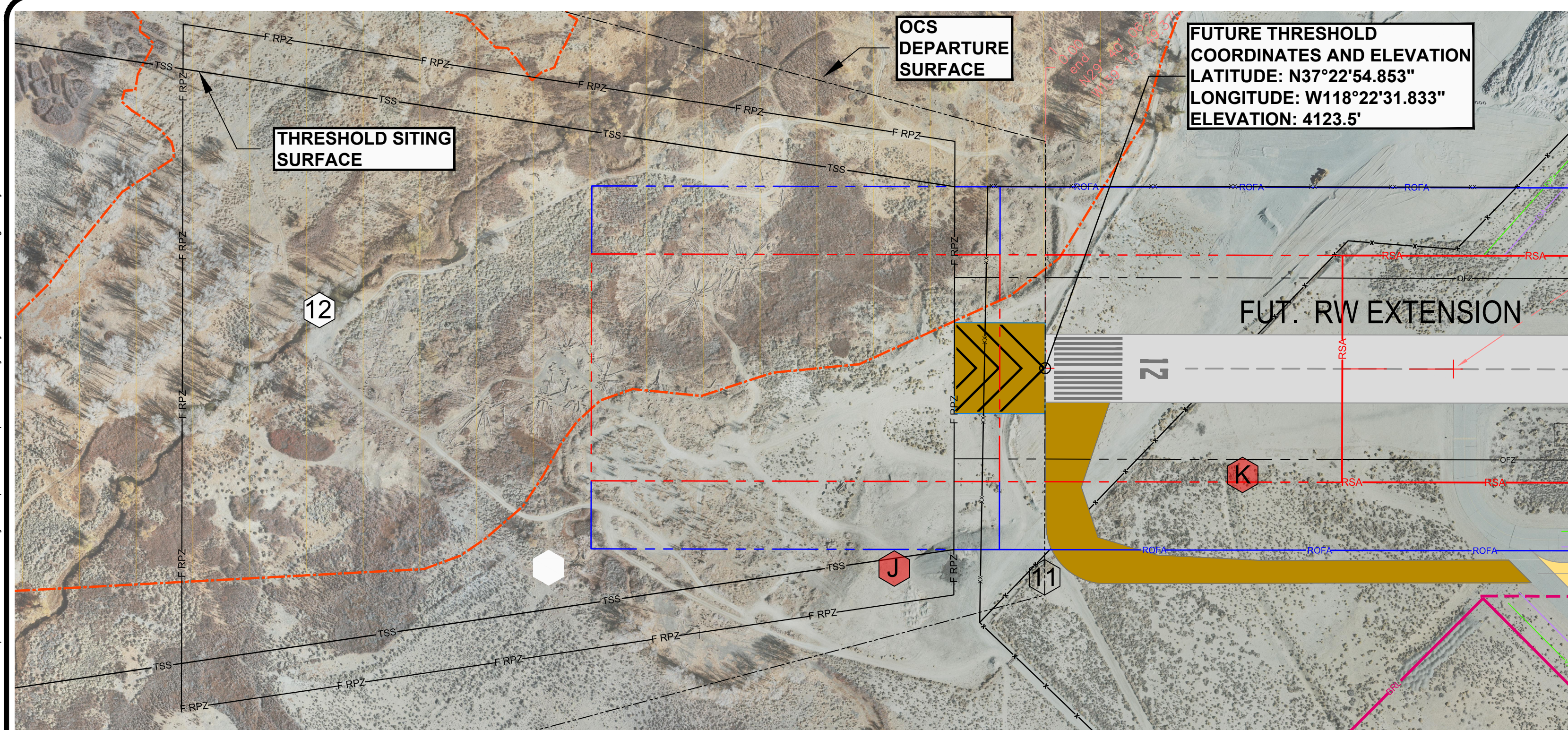
IF SHEET IS LESS THAN 24" X 36" IT IS A REDUCED PRINT - SCALE REDUCED ACCORDINGLY

9-1-2020		BISHOP AIRPORT A COUNTY OF INYO AVIATION FACILITY BISHOP CALIFORNIA				DRAWING <b>3</b> OF <b>12</b> SCALE AS SHOWN DATE APR 2020
		<b>TERMINAL AREA PLAN</b>				
NO.	DATE	BY	REVISIONS	JOB NUMBER	DRAWING NUMBER	DATE
3		ARH	RSA REVISION, PERIMETER FENCE	1452	1452-3	APR 2020
2	10/10/19	BLK	PREVIOUSLY APPROVED ALP			
1	9/19/02	FAA	PREVIOUSLY APPROVED ALP			
DRAWN	BKL	CHECKED	RPW	DESIGNED	BKL	

\* This drawing and the design it covers are the property of Wadell Engineering Corporation. They are merely loaned and on the borrower's express agreement that they will not be reproduced, copied, loaned, exhibited, nor used except in the limited way and private use permitted by any written consent given by the lender to the borrower.

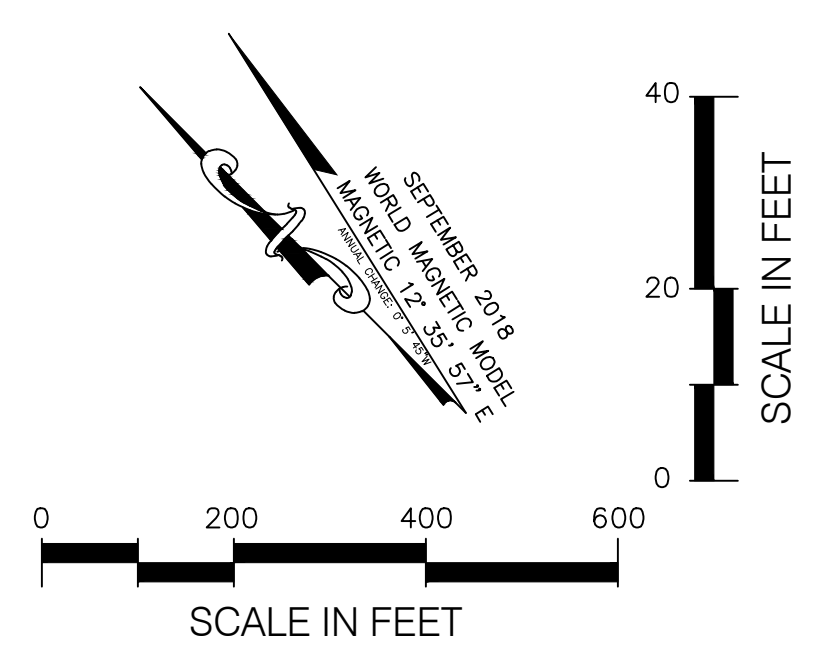
AIP NO. 3-06-0024-15-2013

\* This drawing and the design it covers are the property of Wadell Engineering Corporation. They are merely loaned and on the borrower's express agreement that they will not be reproduced, copied, loaned, exhibited, nor used except in the limited way and private use permitted by any written consent given by the lender to the borrower.



OBJECTS WITHIN APPROACH SURFACE AREA	
ITEM	OBJECT
1	EAST LINE ROAD
2	UTILITY POLE
3	UTILITY POLE
4	UTILITY POLE
5	UTILITY POLE
6	UTILITY POLE
7	UTILITY POLE
8	UTILITY POLE
9	UTILITY POLE
10	FENCE
11	FENCE
12	NORTH FORK BISHOP CREEK

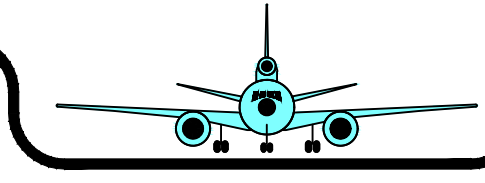
DRAWING LEGEND			
DESCRIPTION	EXISTING	FUTURE	
AIRFIELD PAVEMENT (NEW)	N/A	—	
AIRFIELD PAVEMENT SHOULDER	N/A	—	
BUILDING RESTRICTION LINE (BRL)	—	—	
RUNWAY OBJECT FREE AREA (ROFA)	—	—	
RUNWAY OBSTACLE FREE ZONE (OFZ)	—	—	
RUNWAY SAFETY AREA (RSA)	—	—	
RUNWAY PROTECTION ZONE (RPZ) APPROACH	—	—	
TAXIWAY OBJECT FREE AREA (TOFA)	—	—	
TAXIWAY SAFETY AREA (TSA)	—	—	
FENCE (EXISTING) TYP. 4'	—	—	
OCS DEPARTURE SURFACE	—	—	SAME
THRESHOLD SITING SURFACE	—	—	SAME
GROUND CONTOURS (5' INTERVAL)	—	—	N/A
UTILITY POLE	—	—	SAME
AIRPORT LEASE BOUNDARY	—	—	N/A
AIRPORT USE EASEMENT BOUNDARY	—	—	XXXXXX



OBSTRUCTIONS WITHIN THE DEPARTURE SURFACE							
ITEM	OBSTRUCTION	OFFSET FROM R/W	TOP ELEV.	PENETRATION	DISPOSITION	REMARKS	TRIGGER
D	UTILITY POLE	530' RT	4123.9' (48' AGL)	4.9'	INSTALL OBSTRUCTION LIGHT	FUTURE OBSTRUCTION	RUNWAY EXTENSION
F	FENCE	330' RT	4103' (4' AGL)	4.5'	RELOCATE	CURRENT OBSTRUCTION	AC 150/5300-13A §303.C
G	FENCE	280' LT	4104' (4' AGL)	5.5'	RELOCATE	CURRENT OBSTRUCTION	AC 150/5300-13A §303.C
J	GROUND	450' LT	4130' (0' AGL)	6.5'	REMOVE	FUTURE OBSTRUCTION	RUNWAY EXTENSION
K	GROUND	240' LT	4128' (0' AGL)	2.5'	REMOVE	FUTURE OBSTRUCTION	RUNWAY EXTENSION

**OBSTRUCTION SURVEY NOTES**  
 SURVEY DATA, INCLUDING HEIGHTS OF FEATURES WAS PERFORMED BY QUANTUM GEOSPATIAL, 2015. MEET ALL ACCURACY STANDARDS ESTABLISHED BY THE AMERICAN SOCIETY FOR PHOTOGRAMMETRY AND REMOTE SENSING (ASPRS) AND THE FEDERAL GEOGRAPHIC DATA COMMITTEE.

IF SHEET IS LESS THAN 24" X 36" IT IS A REDUCED PRINT - SCALE REDUCED ACCORDINGLY



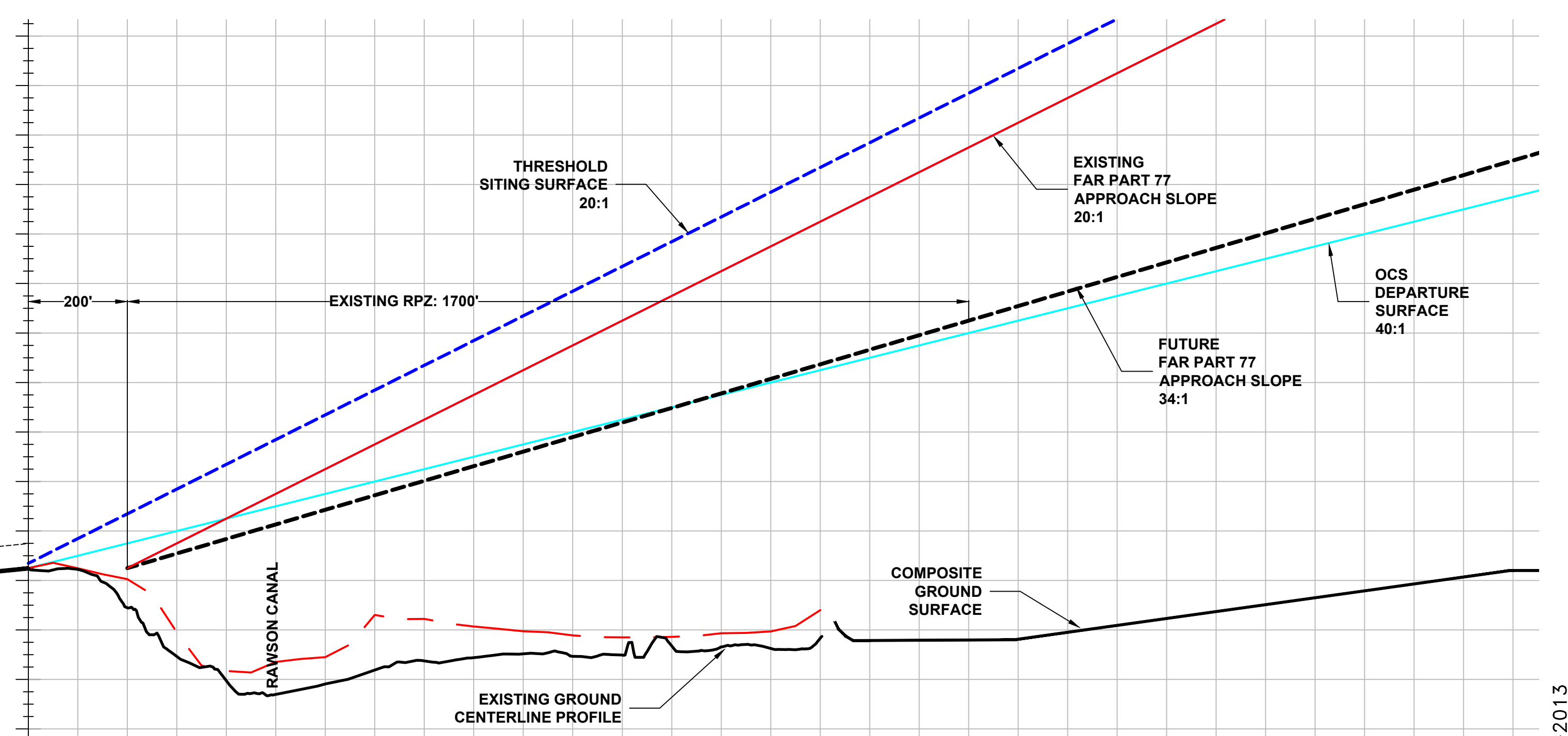
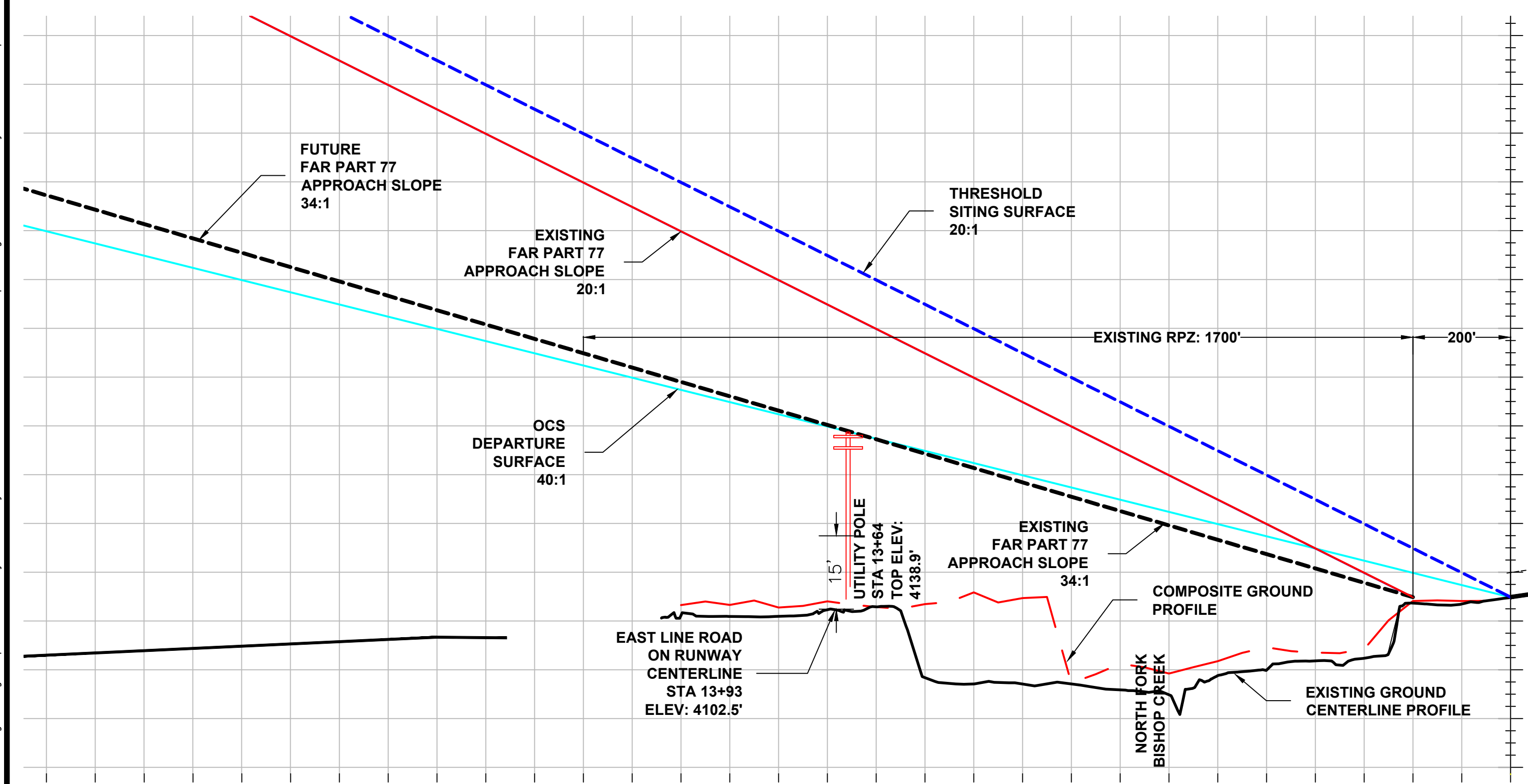
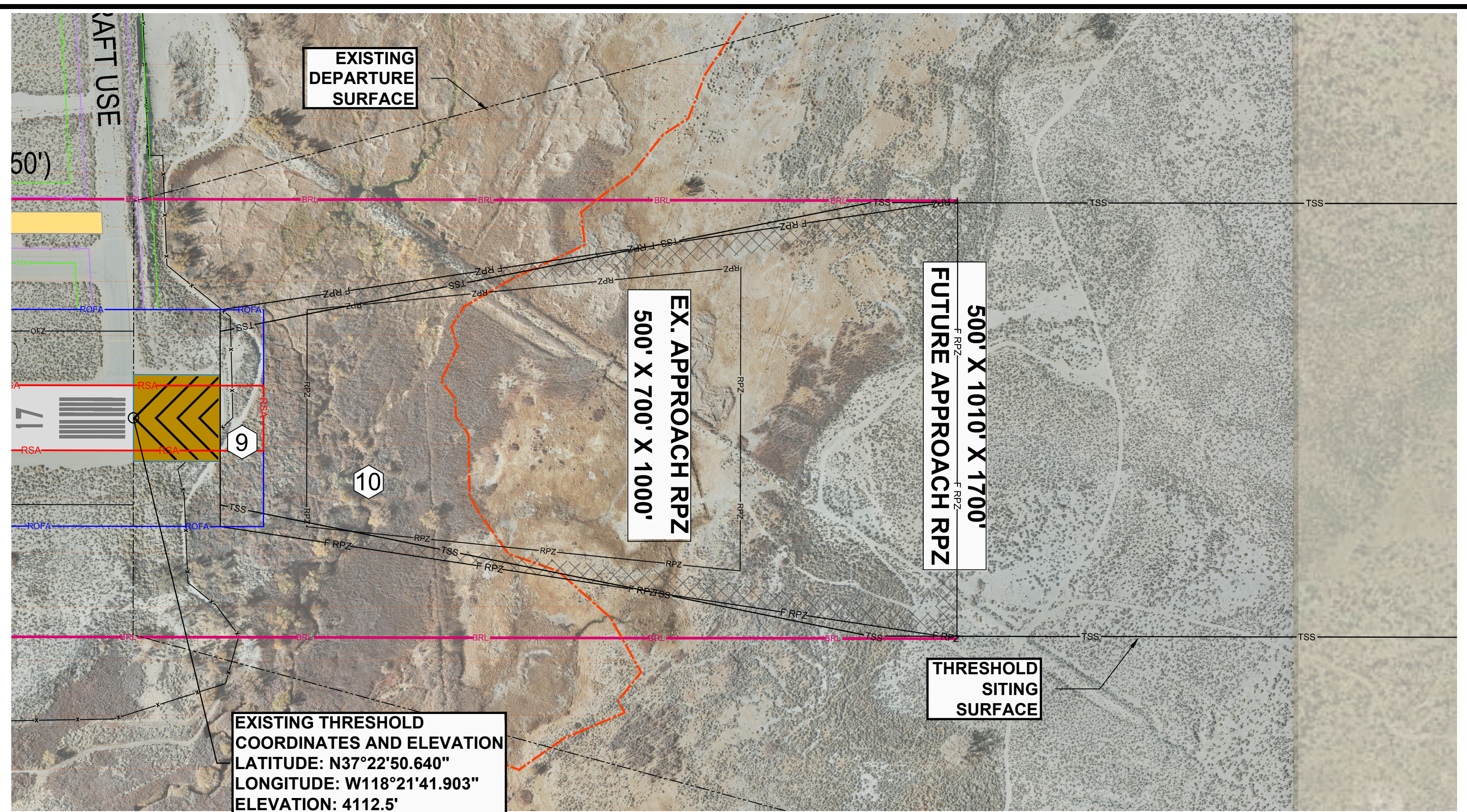
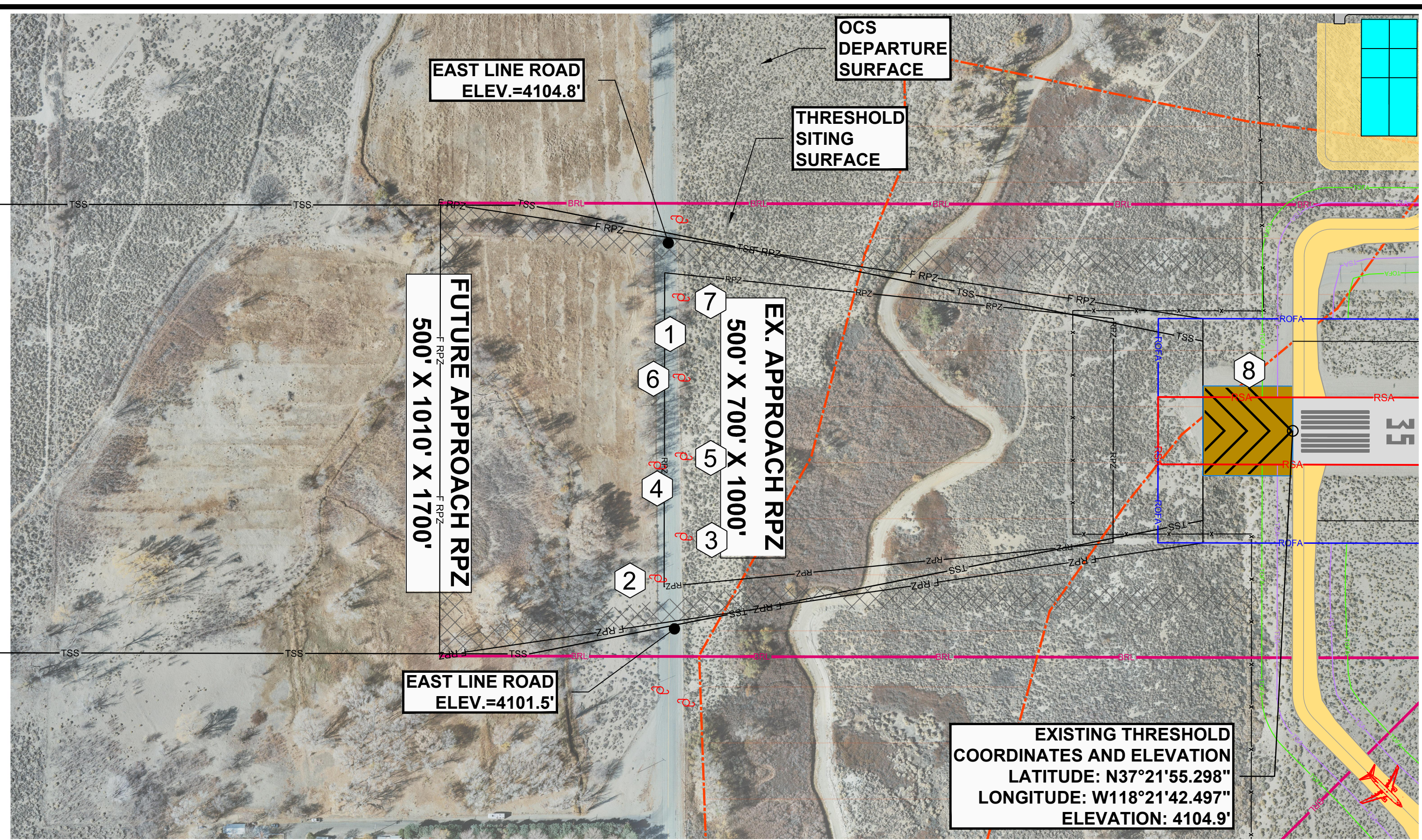
9-1-2020

NO.	DATE	BY	REVISIONS
3		ARH	RSA REVISION, PERIMETER FENCE
2	10/10/19	BLK	PREVIOUSLY APPROVED ALP
1	9/19/02	FAA	PREVIOUSLY APPROVED ALP

<b>BISHOP AIRPORT</b> A COUNTY OF INYO AVIATION FACILITY BISHOP CALIFORNIA		DRAWING <b>9</b> OF <b>12</b>
<b>INNER APPROACH DRAWING</b> <b>RUNWAY 12 - 30</b>		SCALE AS SHOWN DATE APR 2020
JOB NUMBER 1452 DRAWING NUMBER 1452-9	DATE APR 2020	

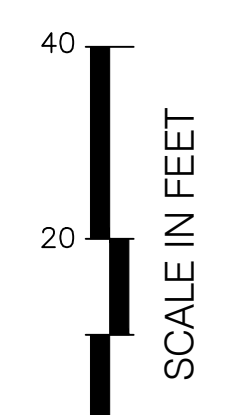
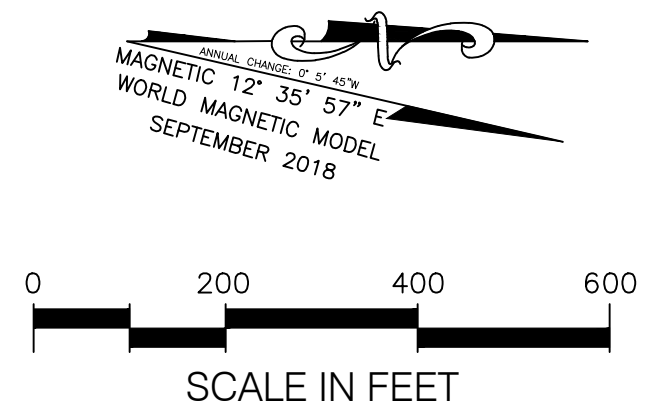
AIP NO. 3-06-0024-15-2013

\* This drawing and the design it covers are the property of Wadell Engineering Corporation. They are merely loaned and on the borrower's express agreement that they will not be reproduced, copied, loaned, exhibited, nor used except in the limited way and private use permitted by any written consent given by the lender to the borrower.



OBJECTS WITHIN APPROACH SURFACE AREA	
ITEM	OBJECT
1	EAST LINE ROAD
2	UTILITY POLE
3	UTILITY POLE
4	UTILITY POLE
5	UTILITY POLE
6	UTILITY POLE
7	UTILITY POLE
8	FENCE
9	FENCE
10	NORTH FORK BISHOP CREEK

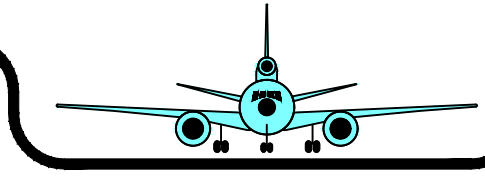
DRAWING LEGEND		
DESCRIPTION	EXISTING	FUTURE
AIRFIELD PAVEMENT (NEW)	N/A	
AIRFIELD PAVEMENT SHOULDER	N/A	
BUILDING RESTRICTION LINE (BRL)		
RUNWAY OBJECT FREE AREA (ROFA)		
RUNWAY OBSTACLE FREE ZONE (OFZ)		
RUNWAY SAFETY AREA (RSA)		
RUNWAY PROTECTION ZONE (RPZ) APPROACH		
TAXIWAY OBJECT FREE AREA (TOFA)		
TAXIWAY SAFETY AREA (TSA)		
FENCE (EXISTING) TYP. 4'		
OCS DEPARTURE SURFACE		SAME
THRESHOLD SITING SURFACE		SAME
GROUND CONTOURS (5' INTERVAL)		N/A
UTILITY POLE		SAME
AIRPORT LEASE BOUNDARY		N/A
AIRPORT USE EASEMENT BOUNDARY		



**OBSTRUCTION SURVEY NOTES**  
 SURVEY DATA, INCLUDING HEIGHTS OF FEATURES WAS PERFORMED BY QUANTUM GEOSPATIAL, 2015. MEET ALL ACCURACY STANDARDS ESTABLISHED BY THE AMERICAN SOCIETY FOR PHOTOGRAMMETRY AND REMOTE SENSING (ASPRS) AND THE FEDERAL GEOGRAPHIC DATA COMMITTEE.

IF SHEET IS LESS THAN 24" X 36" IT IS A REDUCED PRINT - SCALE REDUCED ACCORDINGLY

9-1-2020		BISHOP AIRPORT A COUNTY OF INYO AVIATION FACILITY BISHOP CALIFORNIA				DRAWING	
						10	
3 ARH RSA REVISION, PERIMETER FENCE 2 10/10/19 BLK PREVIOUSLY APPROVED ALP 1 9/19/02 FAA PREVIOUSLY APPROVED ALP		INNER APPROACH DRAWING RUNWAY 17 - 35				OF	
						12	
NO. DATE BY REVISIONS DRAWN BKL CHECKED RPW DESIGNED BKL		JOB NUMBER 1452 DRAWING NUMBER 1452-10		SCALE AS SHOWN DATE APR 2020			



AIP NO. 3-06-0024-15-2013